

the Belleville
times/news

Vol. 69 No. 2 Copyright-Frank A. Orechio, 1977

Thursday December 15, 1977

246 Washington Ave., Belleville, N.J. 07109

759-3200

Second class postage paid at Newark, N.J.

25¢

Parking ban urged at HS

Where will Belleville High students park their cars when the existing lot is turned into a construction site for a new school addition?

Town Hall is so worried that student cars will spill onto neighboring streets around the high school that Mayor Michael Marotti has called for a conference session with Planning Board Chairman Joseph Grande.

Commissioners fear student parking on Greylock Parkway and other streets near BHS will prompt a rash of citizen complaints, block driveways, and force police problems in general.

"It seems to me the Board of Education does not want to take the bull by the horn and tell the students they can't drive to school," is the way Police Commissioner Rocco Saletta sees the problem.

Mayor Marotti notes the Planning Board's suggestion that the School 7 parking lot be utilized is not a "satisfactory solution because that lot is jammed as it is with teacher and staff cars."

The BHS parking problem came up Tuesday while Mayor Marotti and Commissioners were reviewing minutes of a recent Planning Board meeting. Commissioners generally do not feel the Planning Board adequately addressed itself to the student parking problem when approving construction plans for the new addition being built at Belleville High School.

Mayor Marotti also is fearful that should the School Board ban student parking on its property, the problem would only shift to neighborhood streets. "Those streets are already going to be a problem once the contractors start bringing in all their equipment and men to the area anyway," the Mayor says.

One means of controlling student parking on neighborhood streets would be to restrict cars to one or two hour time limits. That possibility however was not discussed by the Board of Commissioners.

Belleville officials OK 3 a.m. curfew for bars

New law to come in month

Belleville tavern owners will get their wish for Christmas.

When Town Commissioners meet again on Dec. 27, the board says it will introduce an ordinance setting up a six-month trial period of 3 a.m. tavern closings for Fridays and Saturdays.

Town Attorney John Scott is drafting the legislation now in response to a petition filed this past week by 24 license holders here. Belleville law presently dictates a 2 a.m. closing, seven days a week.

Public Safety Director Rocco Saletta is sponsoring the six-month trial legislation to enable Belleville tavern owners "to compete with the 3 a.m. closing hour in surrounding towns." Saletta says Newark and Clifton presently close at 3 a.m. on weekends and in Newark's case, the weekend 3 a.m. closing hour was only recently enacted on a probationary basis.

Revenue and Finance Commissioner Joseph McGreevey isn't particularly enthusiastic about a 3 a.m. closing, even on Fridays and Saturdays as Saletta will propose.

"I think all we're going to do is cause a greater problem for police," McGreevey says. And the Finance Director doesn't buy the premise that Newark's 3 a.m. closing is harming business in Belleville. "You tell me who from Belleville is going to a Newark tavern at 2 o'clock in the morning," McGreevey asks.

Despite McGreevey's reservations with a later closing hour, he told the Times/News yesterday that he would not vote against a 3 a.m. trial closing period when the ordinance comes up for final passage next month.

Saletta says he monitors and reviews police department activities. Please see "Trial" on page 12.



Christmas Chorus — Montgomery Presbyterian Church, Mill St., sponsored a Christmas concert Sunday which featured two cantatas by Bach. The highlight of evening were solo performances by the church chorus and the Greater Newark Chorale.

Con game in town cheats on repairs

Belleville police warn residents, especially senior citizens, to beware of contractors making false claims about homes being in violation of town ordinances unless the houses are repaired.

According to authorities, a rash of recent incidents have been reported where a representative of a home improvement firm contacts a homeowner and states the house is in

violation of a town ordinance or fire code and must be corrected.

After the company does the work, the owner is slapped with an enormous bill for a job which may not have been necessary, says Belleville Deputy Police Chief Frank Haight.

Homeowners are directed to contact Belleville Police if there is any doubt of authenticity of contractor's claims or the company's reputation.



Senior Serenader — "Ramblin Sam" Hertz, a Belleville accordianist, cracks a smile while he entertains at the local chapter of the American Association of Retired Persons annual Christmas Party at Gene Boyles Restaurant Tuesday afternoon.

Water main contract awarded under cloud

By MIKE COREY

Amid a storm of controversy and indecision which required convening two special meetings, Belleville commissioners agreed to award a contract for a new water main Friday afternoon.

The local board voted 4-0 at Town Hall, with Health Commissioner Vincent Strumolo unavailable, to award a water line construction project on Greylock Parkway to the Newark Construction Company, the lowest bidder.

The board, under pressure from the contractor to act before Dec. 12 — five days before the deadline which would forfeit a \$232,000 grant from the Federal Economic Development Administration — called the

first special meeting for 12:30 p.m. Thursday and reconvened Friday at 3 p.m. to settle the issue.

The controversy arose when Belleville town engineer Fred Busch turned over \$30,000 worth of the preliminary work on the line to his own engineering firm.

The indecision by the board came into focus when commissioners and assistant town attorney Frank Zinna, called in at the last minute to replace regular commission counsel John Scott, could not determine whether the town would be sued by Busch if the project were awarded to another firm.

"If we made a mistake we have to be ready to correct it," stated Zinna. "My feeling is the original contract is a direct conflict of interest and if we have to resolve the issue in court

then we'll have to resolve it in court."

According to Belleville Mayor Michael Marotti Tuesday night the town has not yet been notified of any suit by Busch's firm against Belleville but should know by Friday when work on the project officially begins.

"I personally feel that if we have to go through a court case and spend money to fight a suit, we should ask for his immediate dismissal," stated Public Safety Commissioner Rocco Saletta Friday.

"That may meet with some legal problems," pointed out the mayor. "Like holding a hammer over his head."

"I'm not saying we put it in the form of a resolution but we should make it more of an understanding among the commissioners," added Saletta.

Channel case could decide fate of Sunday blue laws

The most likely way Belleville's ban on Sunday business for chain stores will end will be through the courts. That's the opinion of Commissioner Rocco Saletta who in three attempts has been unable to change a 3-2 split on the Board of Commissioners in favor of repealing an ancient law which forbids Sunday business by any establishment with more than four employees.

Mayor Michael Marotti is Saletta's only ally in the battle. Today, however, Channel Home Center obviously is out to challenge the local ordinance although Channel executives are keeping mum on their intentions.

The store here has received more than 14 citations for keeping its new Franklin Avenue facility open for business every Sunday since Nov. 10 after the chain opened its Belleville outlet in the former W.T. Grant building.

When the test case came up for the first time before Judge Edward Abramson last Thursday, Channel didn't even send an attorney — not quite an oversite, local officials believe, but instead a clear indication that Channel intends to wage its legal battle at the county and state level rather than in municipal court.

Judge Abramson wasn't particularly pleased with a local store manager representing the entire corporate chain who asked for a three-week delay in the case. The Judge announced he was postponing the case for only a week and directed Channel to show up the next time with counsel.

Not being overlooked is the fact all the legal delay is taking place right in the middle of the pre-Christmas buying spree. Channel continues not only to remain open here in violation of Belleville law, but has been cited for selling goods forbidden for Sunday sales by state statute.

Saletta, who philosophically is on Channel's side in fighting the Sunday sales ban, ironically is Belleville's Public Safety Director overseeing the Police Department which is handing out summonses right and left each Sunday at Channel.

"They've been cited not only for violating the Belleville ordinance, which I personally believe is discriminatory, but also for selling items forbidden by state statute," Saletta reports.

Saletta doesn't think Channel is delaying a legal opinion on the Belleville ordinance.

"Keep in mind that all of Channel's other stores are open on Sundays, not only the one in Belleville. I think they would like to keep the Belleville store open all year round, selling all the goods and doing all the business here just like they do everywhere else," Saletta says. He told the Times/News that although he's been following the Channel case closely, he hasn't discussed or conferred about the matter with Channel employees here or elsewhere.

"Maybe the mere fact that the local ordinance will be challenged will persuade one more commissioner to change his or her vote," Saletta said. Up until now, those "no" votes for appeal appear unchangeable. Favoring the Sunday sales ban are Commissioners Mary Senatore, Joseph McGreevey and Vincent Strumolo.

Those favoring the Sunday ban say they are doing so to protect small mom and pop shops. In the Silver Lake area, especially, small grocery stores fear Sunday competition from the nearby Pathmark would destroy their livelihood. Pathmark's Silver Lake complex on Belmont Avenue is open 24 hours a day — six days a week.

318 Graylock Pkwy.
Belleville
751-2668

Abbey Road

RECORD STORE

SALE

KISS LP\$6.99
QUEEN LP\$4.99
NEIL YOUNG LP\$9.99
ELO LP\$6.99

OTHER ALBUMS ALSO ON SALE!

Fleming's Food Service Supply Outlet

WHOLESALE & RETAIL RESTAURANT SUPPLY OUTLET

CHRISTMAS & NEW YEAR PARTY SUPPLY OUTLET

PARTY GOODS
DISHES (PAPER, PLASTIC, AND CHINA)
TABLE COVERS
PLASTIC AND STAINLESS STEEL CUTLERY
AND OF COURSE: HATS • HORNS • NOISEMAKERS

PLASTIC TUMBLERS
KITCHEN UTENSILS
JANITORIAL SUPPLIES
GIFT ITEMS
(individual & packaged)

FOUNTAINS & CHAFING DISHES - SALES AND RENTAL

FLEMING'S...YOUR ONE-STOP SHOPPING

HEADQUARTERS FOR YOUR HOLIDAY SUPPLIES

Holiday hours: Dec. 1-Dec. 23 Open 'til 9 P.M.

189 Wash. Ave., Belleville

OPEN 6 DAYS A WEEK
MON. thru SAT 9-6
751-1176

SALE NOW ON.

Terry Shops

NUTLEY • BELLEVILLE

Santas' GIFT SPECIALS

SALE NOW ON.

THE PERFECT GIFT!

TURTLE-NECK or COWL NECK SWEATERS

\$3.97

COLD WEATHER AHEAD

WARM, SOFT, BRUSH-GOWNS

\$3.37

DOUBLE-KNIT WARM ACRYLIC PANTS

\$6.97

SO PRETTY! WARM BRUSH PAJAMAS

\$5.99

SHEER-NYLON-SUPPORT TOPAZ STOCKINGS

\$1.97

ALL PLAYTEX GIRDLES & BRAS

ON SALE

THAT EXTRA GIFT! COBBLER APRONS

\$2.97 & \$3.37

SUCH PRETTY, NYLON HALF-SLIPS

Reg. or XL \$2.57

Drop in to Joey G's

the convenient lounge!

81 Franklin Ave., Nutley
259-9608

DROP IN FOR A SNACK

11:30 A.M. ON

CHANGE OF MANAGEMENT

- Central location
- Mon. night "Food Ball"
- Shuffle Board
- Hot & Cold Sandwiches

MON.-SAT. 7 A.M.-2 A.M.

college scene

From Boston's Berklee College of Music comes word that Mark Lampariello, son of Mr. and Mrs. Larry Lampariello, 51 Coeyman Ave., has been placed on the spring semester dean's list. The list requires at least a 3.3 average.

Lampariello is majoring in the professional music program, and on graduation, he will be qualified as a teacher, arranger-composer and instrumentalist.

Coralya Van Steen, daughter of Mr. and Mrs. Frederick Van Steen, 401 Passaic Ave., has been named to the dean's list at Concordia College, Bronxville, N.Y.

Two local students attending Alfred University, Alfred, N.Y., have been named to the dean's list. They are James Semper, son of Mr. and Mrs. Theodore Semper, 66 Brookdale Ave., and Lisa Stark, daughter of Mrs. Jean Stark, 250 Whitford Ave.

Cheryl Greengrove, 162 Grant Ave., has been given dean's list ranking for the spring term at Moravian College, Bethlehem, Pa.

Named to the spring quarter honors list at Bowling Green State University, Bowling Green, Ohio, is P. Andrew Spahr, 66 Mountain View Ave. Spahr had a 3.73 average on a 4.0 scale.

Christopher Carson, son of Mr. and Mrs. John Carson, 156 Rhoda Ave., attended the Faragut Summer Naval Camp in Pine Beach for six weeks this summer.

Kiwanis Club party today

Belleville Kiwanis Club's Christmas Party is slated for today. Plans were finalized at last Thursday's regular dinner-meeting at the Fountain Restaurant.

Today's yuletide event will feature a dinner, gifts and music by Ann and Vince Nocera.

President Elect Anthony Peda, presiding in the absence of club President Michael Marotti who was in California, thanked members for their cooperation in making the organization's "baskets for the needy," holiday campaign a success. The committee was headed by John Iannuzzi and Sy Grossman.

Immediate Past President Vincent Sorrentino announced there will be an interclub meetings with Montclair Kiwanis at the Manor Dec. 22.

John Fagioli receives B.A.

John H. Fagioli, son of Mr. and Mrs. John W. Fagioli, 56 Mt. Prospect Ave., has received a bachelor's degree in biochemistry from Rutgers University in New Brunswick.

Fagioli, a dean's list student, studied at the University of Urbino, Italy, as a member of the 1976 Rutgers summer exchange program. At Rutgers, he was on the dorm council resident student board and the dean's advisory council. He belonged to the biology club and played intramurals.

Presently, Fagioli is pursuing graduate work and is employed as a research assistant at Rutgers.

Fagioli is a graduate of Belleville High School, where he was a member of the National Honor Society, the track team, the band and the Key Club.

Pentagon Haircutters

835 Joralemon St., Belleville

COMPLETE STYLING FOR THE ENTIRE FAMILY

OPEN 6 DAYS

AND FRIDAY NIGHTS

COLORING, PERMANENT WAVES, FROSTING - LONG OR SHORT HAIR

NO APPOINTMENT NEEDED

759-3595

FREE PARKING

BUFFET CATERING IS OUR BUSINESS

PICK-UP PARTY BROCHURE NOW

Thurs. Fri. Sat. Sun. Specials
Eat-in Tables Now Open

1 lb.
Home-cooked Roast Beef
\$2.69

1 lb.
Schickhaus Hard Salami
\$2.69

1 lb.
Fritz Clover Bologna
\$1.33

1 lb.
Imported Swiss Cheese
\$2.14

SPECIALS

SOLD IN ONE POUND PACKAGES

Towne

751-3935

DELICATESSEN

650 JORALEMON ST.
Cor. Franklin Ave., Belleville

HERE'S A GREAT WAY TO INCREASE YOUR INCOME!

MONTHLY DIVIDENDS

FROM FRIENDLY FIRST DeWITT

(INTEREST BASED ON A 30-DAY MONTH*)

YOUR SAVINGS	REGULAR PASSBOOKS	SAVINGS CERTIFICATES - \$1,000. MIN.				
	5 1/4%	5 3/4%	6 1/2%	6 3/4%	7 1/2%	
	Day of Deposit to Day of Withdrawal	90-DAYS	ONE YEAR	2 1/2 YEARS	4-YEARS	
1,000	\$ 4.38	\$ 4.80	\$ 5.43	\$ 5.64	\$ 6.27	
5,000	21.92	24.02	27.15	28.20	31.34	
10,000	43.84	48.03	54.31	56.40	62.69	
20,000	87.69	96.06	108.62	112.81	125.38	

Monthly dividends not applicable to school savings, IRA & Keogh accounts or security deposits.

*While the dividends in a 31-day month are even higher than those presented here, this 30-day table shows the many sweet ways that "smart money" can supplement your monthly income. So put your money to work at any of our 6 offices. Our friendly tellers will be happy to fill you in on the details.

First DeWitt Savings

AND LOAN ASSOCIATION

BELLEVILLE • BLOOMFIELD • HOPATCONG

BELLEVILLE

BLOOMFIELD-CENTER

WATSEONG

BELLEVILLE AVE.

BROOKDALE

HOPATCONG

BELLEVILLE (Main Office): 483 Washington Ave. Daily 9-4; Monday Even. 6:30-8; Saturday 9 A.M.-Noon

BLOOMFIELD CENTER: 667 Bloomfield Ave. Daily 9-4; Monday 'til 8

WATSEONG: 20 Watseong Ave. Daily 9-4; Monday Even. 6-8

BROOKDALE: Broad & Watchung. Daily 9-4:30; Monday Even. 'til 8; Saturday 9 A.M.-Noon

BELLEVILLE AVE: 80 Belleville Ave. Daily 9-4; Friday Even. 5:30-8

HOPATCONG: Lakeside Blvd. & River St. Rd. Daily 9-4; Friday Even. 5:30-8

IN BELLEVILLE CALL 751-2800 • IN BLOOMFIELD 743-6300 (ALL OFFICES) • IN HOPATCONG 398-0900

You couldn't do business with friendlier people

School Ten curriculum spells out student fun



Spellbound — School Ten second grade teacher Mrs. Laughney supervises while Joseph Cerreto, Jennifer Oese, Susan O'Donnell and Angela Volpe spell out words from letter cubes as part of a program which allows students to see and hear likenesses and differences in consonant and vowel sounds. Steven Giuliano, left background, is busy completing his spelling workbook amidst all the activity.



Junior Scrabble — Another learning activity enjoyed by the school's second graders is Scrabble for Juniors. Stephen Schultz and Tina Pascavage diligently work on the game which is beneficial in increasing vocabulary while fellow classmates Dominick Tucci, Rickie Parrillo, Joanne DeAmbrose and Linda Mundy alphabetize words.



Chain Letters — George Speer and Laurie Puleo improve their spelling by using Link Letters to build words and sentences. Debora McHale, Lauren Mulhearn and Angela Crocco do their "thing" by putting words in alphabetical order.



Word Masters — After a eventful day at school Susan O'Donnell, Rachel Avello, Steven Giuliano, Kathleen Schuster, Joyce Luongo, Daniela Salazzara, Anthony Accola, Linda Mundy and Jennifer Zarra wind down by completing their spelling assignment.

Parents asked to help teach

Parents of Belleville schoolchildren are being asked to contribute their knowledge and experiences to various classes throughout the school system in a letter being sent home to all parents this week.

Signed by Dr. John Greed, superintendent of schools, the letter requests that individuals who would be willing to occasionally present something of interest to the students submit their names for inclusion in a resource file.

The resource file would contain the names of all interested people," Dr. Greed said. "We're asking people with a particular hobby or talent to share it with us at our mutual convenience."

Purpose of such a file is to make schools broader than they are for Belleville's children, both at the elementary and secondary levels, Dr. Greed said.

Already, Belleville schools have had volunteers of this nature, including lawyers, policemen and firefighters. Teachers also have asked newspaper reporters, medical doctors, postal workers and other professionals to visit classes and discuss their work.

Anyone interested in this program should fill out the form supplied by the town's schoolchildren or obtain one through the Board of Education office, 383 Washington Ave.

You'll find what you need at

DEPENDABLE

VARI JEWELERS

12 Ridge Rd. No. Arlington
998-0707

Sit on this!!

La Bate & Conti Inc.

HAVE MADE THEIR

fine, commercial quality chairs

AVAILABLE TO THE Public!

VISIT OUR SHOW ROOM DISPLAYING COLONIAL, MODERN, RUSTIC, BENTWOOD & CANE SEAT STYLES. FEATURING WOOD OR METAL FRAMES & EXTRA TOUGH NAUGAHYDE UP-HOLSTERY.

OPEN
DAILY — 8:00 PM TO 5:30 PM
SATURDAY — 9:00 A.M. TO 12:00 P.M.

La Bate & Conti Inc.

639 Passaic Avenue
Nutley, N.J. 07110
(201) 661-3300

CRYSTAL & SILVER

FREE or at very little cost

FOR PROVIDENT SAVERS

J. Elegant Silverplate Wine & Champagne Cooler — 2 qt. capacity

H. 6 pc. Wine Service Set — 4 wine glasses, carafe and wood tray

I. Classic Silverplate Ice Bucket — insulated

D. 6 pc. Wine Service Set — 4 wine glasses, carafe and wood tray

E. 6 pc. Wine Service Set — 4 wine glasses, carafe and wood tray

F. 6 pc. Wine Service Set — 4 wine glasses, carafe and wood tray

G. 6 pc. Wine Service Set — 4 wine glasses, carafe and wood tray

A. Handsome Candy Jar with cover

B. 10" Rocks Tumbler

C. 14 oz. Highball

D. 7 oz. Champagne or Sherbert

E. 7 oz. Wine on-the-stem

F. 12 oz. Water Goblet

G. 7" Dessert Plate

SETS OF 4

Just for Provident Savers
If you're not one — BECOME ONE!

Genuine hand cut crystal in line wheat pattern by Javil and classic silverplate accessories by famous F.B. Rogers — handsome-looking gifts to make you a gracious host — all brought to you by Provident. Open an Old Beehive Savings Account today (or add to your present one) and enjoy elegant dining along with high monthly dividends.

Allow 1 week for delivery	DEPOSIT \$5,000 OR MORE and pay only	DEPOSIT \$2,500 OR MORE and pay only	DEPOSIT \$1,000 OR MORE and pay only	DEPOSIT \$500 OR MORE and pay only	PRESENT PROVIDENT CUSTOMERS may choose and pay only
A Candy Jar	FREE	FREE	FREE	2.25	3.00
B Rocks Glasses (4)	FREE	FREE	FREE	4.25	4.75
C Highball Glasses (4)	FREE	FREE	FREE	4.25	4.75
D Champagne Glasses (4)	FREE	FREE	4.75	5.75	7.00
E Wine Glasses (4)	FREE	FREE	4.75	5.75	7.00
F Goblets (4)	FREE	FREE	4.75	5.75	7.00
G Dessert Plates (4)	FREE	6.50	7.50	8.00	9.00
H Wine Server Set	6.50	10.00	15.00	18.00	20.00
I Ice Bucket	13.00	18.00	23.00	25.00	27.00
J Wine Cooler	18.00	25.00	29.00	33.00	35.00

New Jersey tax included: Only one gift per each depositor. Other gifts only for Provident Savings and Direct Accounts. Deposits must remain in Savings Accounts for 14 months. Other gifts January 14, 1978.

PAY BILLS BY PHONE

DIRECT ACCOUNT

THE OLD BEEHIVE

PROVIDENT SAVINGS BANK

OFFICES IN HUDSON, BERGEN, ESSEX, OCEAN AND MONMOUTH COUNTIES

MEMBER FDIC • EACH DEPOSITOR INSURED TO \$40,000

NEIGHBORHOOD OFFICE: 208 Washington Ave. Cor. Academy St. (Belleville) (DRIVE-IN)

DIVIDENDS PAID MONTHLY

5 1/4%

Bring us your bankbooks — we'll transfer your funds to Provident without charge.

opinion

The eloquent Mr. Hughes

Chief Justice Richard J. Hughes recently addressed a joint session of the New Jersey Legislature in an unprecedented appearance to speak on the posture of the New Jersey judicial system.

The former governor was eloquent. He made points that had to be made — and only Richard Hughes could have made them with the authority they commanded.

The judicial system is one of three equal branches of government. While sometimes we think we could do without a legislature or without a govern-

nor, our democracy cannot exist without a fair, able and impartial judiciary.

One of the pleas Chief Justice Hughes made was for salary increases for members of the judiciary. We think the chief justice made a good case to support a salary increase for our judges, and we recommend to our legislative representative favorable consideration be given to the plea of the chief justice.

Frank A. Orechio

Bell vs. Case

34-year old Trenton resident Jeffrey Bell, a Republican conservative, this week launched his bid to unseat senior U.S. Senator Clifford P. Case.

Primary elections are provided for in our constitution to permit any qualified voter to enter the primary election to contest for his party's nomination for the office she or he seeks. Jeff Bell has that right and he is exercising it.

This is not to say all of us should remain silent in the face of a challenge to the incumbency of Senator Clifford P. Case.

A few weeks ago we endorsed Cliff Case for reelection — without giving any thought to the possibility his very nomination by the Republican Party would be challenged. So we must put first things first.

The nomination — we have been on the state political scene for many years. We have have seen challengers come and go — some more qualified than others.

We have seen a Republican Party that was supreme in the state and in the County of Essex. We have seen the party reach new lows of despair.

Through it all — since 1954 U.S. Senator Clifford P. Case has been the Mickey Mantle, Joe De Maggio and the O.J. Simpson —

the everything — the superstar of New Jersey's Republican Party.

And now down the pike comes a young challenger who questions the philosophy of Cliff Case as manifested in his voting record. It is a point well taken. It is a legitimate challenge to make. Young Mr. Bell is able and eloquent to make that challenge.

For our part we are satisfied U.S. Senator Clifford P. Case has served well the needs of our people and our state. He is one of the most able, dedicated senators in the United States.

The challenge which Bell is making in the name of conservative Republicans must be taken seriously for the primary election may be controlled by a militant minority of Republican voters.

Those among us who believe Cliff Case should be the Republican nominee for U.S. Senator in 1978 should lose no time in offering our services to renominate one of America's outstanding statesmen.

Frank A. Orechio



FLIGHT 897

Florida available to all for only \$55

I met Leroy Stokes, Eastern Airlines Passenger Agent Manager at Ft. Lauderdale Airport. I conversed with him about the \$55 Fort Lauderdale-Newark bargain fare. Leroy's response was: "Col. Borman (Eastern Airlines President, Frank Borman) wants it to work — and we are going to make it work!"

Believe me, my experience reflected the determination of Leroy Stokes' Fort Lauderdale team. They will make the \$55 fare work — to the advantage of air travelers.

I came back from Fort Lauderdale on the superwide three jet engine L1011 and it was quite an enjoyable trip, in part due to the exceptional service of a blonde stewardess, Mary Ellen Mulaney. She is a deceptively bright blonde who just keeps herself busy, busy, busy.

When I mention Eastern and its terrific personnel, I can't lose sight of the excellent job Passenger Agent Richard Barbi performs at Newark Airport. He is one tremendous employee, and at the Fort Lauderdale end Eastern has a few outstanding employees — a lucky thing for Eastern — Chris De Luca, Al Dunbar, June O'Malley, Tony Barletta, Carmen Curro, Don Campbell.

I have said it before many times and it's worth repeating now. When you visit the Eastern Airlines Newark Passenger Service area and you have a problem, ask for Fred Neidenstein. He is the greatest, and he is there to help people with problems.

In a recent column I reported that the 727 three engine jet consumed more than 200,000 gallons of gas on the Fort Lauderdale-Newark run, and I said I didn't believe the figure. When I came up on the L1011 I asked the same question, and the answer came back that the

bigger L1011 consumes 4,700 gallons of gas. That sounds more like it, and if any reader was misled by the previous gas consumption figure reported in this column, it was unintentional. I didn't believe the number of gallons either.

On the trip down to Florida via Eastern flight #759, aboard a two jet engine DC 9 aircraft, the Senior Stewardess, who made the trip more than enjoyable, was Sandra Beare. Captain Vernon Renaud was the handsome expert who made the trip feel like a living room scenario. I report nice things about Eastern Airlines personnel because they are all true.

ILLITERACY TEST for teacher? Well, why not? Some Maryland school districts now require applicants for teaching jobs to pass examinations in spelling and punctuation. This may surprise some readers but it doesn't surprise me. I have received correspondence from teachers and I must say their grammar leaves something to be desired. Of course one teacher doesn't make a group — but if one teacher is unable to use proper grammar, the students that have the misfortune to be tutored by such a teacher labor under an extreme handicap. If some of our graduating students can't read or write properly, part of the blame must fall on the shoulders of our teachers.

THE MIAMI HERALD newspaper recently reported that a man in a blue car threw a little black puppy out of the car and roared off. A reader taking note of the incident observed that it was too bad the driver wasn't thrown out of a car at the same age. The world is full of queer people. How can a human being be so cruel to an animal that can't fight back and defend himself?

AS IS OUR CUSTOM, Edith and I are not sending Christmas cards; and this year in lieu of cards, we have contributed \$100 to The Nutley Sun Christmas Appeal Fund which will be administered by the trustees of The Michael Fund — a cause worthy of every reader's consideration.

WHAT MAKES A DAY? There are 1,440 minutes in a day. How many are given to thinking of God? A modern encyclopedia estimates that a man who lives seventy years devotes:

- 3 years to education;
 - 8 years to amusements;
 - 3 years to his toilet;
 - 6 years to his walks;
 - 6 years to his walks;
 - 1 year to military service;
 - 11 years to work;
 - 6 years to reading;
 - 24 years to sleep.
- Please note there is no time listed devoted to God.

3 years for conversation;
- 3 years for toilet;
- 5 years for walks.

But for religious worship, the answer is still nothing.

I would challenge these findings but challenge as I may, the statistical compilation is closer to the truth for the average person. We are a pagan nation with less than 50% of the population claiming any religious affiliation.

It may be well for all to pause for a moment in our day to reflect upon the time we set aside for daily prayer. If it happens by design, accident, error or need? At the top of the list, time assignments should be service to the Lord first, because it does make us feel better, right?

Belleville bulletin board

THURSDAY, DEC. 15

12 p.m. Lions Club Luncheon meeting. — Chandelier Restaurant, 340 Franklin Ave.

1 p.m. Senior Citizens' Club sponsored by Essex County Parks Commission. — Belleville Ave., in the park.

3:45 p.m. "Make a Gift for a Friend," a children's program — the Children's Room, Belleville Public Library, 221 Washington Ave.

6:30 p.m. Belleville Kiwanis Club's Christmas Party — the Fountain Restaurant, 46 Watessing Ave.

6:30 p.m. Optimist Club meeting. — 36 Carmer Ave.

7 p.m. Christmas films: "Christmas Tree," "The Night Before Christmas," "The Great Toy Robbery," and "IT" — Children's Room, Belleville Public Library, 221 Washington Ave.

7:30 p.m. Patrolman's Benevolent Assoc. (PBA) meeting. — Little League Building.

8 p.m. Varsity Club meeting. — Little League Building.

8 p.m. Michael V. Marotti Civic Association.

8 p.m. Craig Fund meeting. — Fewsmith Church, 444 Union Ave.

8 p.m. District Parent Council Meeting for parents of children in the Title I program and all interested citizens — Board of Education offices, 383 Washington Ave.

8 p.m. Annual Christmas Concert of the Belleville High School Chorus and Orchestra — BHS auditorium. Admission \$1.

8:30 p.m. Younginger-Alden Jr. Auxiliary to Post No. 275, Veterans of Foreign

Wars, regular meeting — Post Home, 17 Belleville Ave.

FRIDAY, DEC. 16

8 p.m. "The Sound of Music" presented by Family Playhouse — 28 Brookline Ave., Nutley. Tickets are \$3.50 and \$4 - reservations by contacting the box office at 284-0404.

Belleville Post No. 105, American Legion, Christmas Party — Post Hall, 621 Washington Ave.

SATURDAY, DEC. 17

10 a.m. Magic show presented by Joe Fischer, Belleville High School student — Children's Room, Belleville Public Library, 221 Washington Ave.

10:11 a.m. "Playing Solitaire With Regular Cards," taught by Phyllis Haerzl — Adult Department, Belleville Public Library, 221 Washington Ave.

8 p.m. "The Sound of Music" presented by Family Playhouse — 28 Brookline Ave., Nutley. Tickets are \$3.50 and \$4 - reservations by contacting the box office at 284-0404.

SUNDAY, DEC. 18

Belleville Post No. 105, American Legion, Children's Christmas Party — Post Hall, 621 Washington Ave.

3 p.m. "The Sound of Music" presented by Family Playhouse — 28 Brookline Ave., Nutley. Tickets are \$3.50 and \$4 - reservations by contacting the box office at 284-0404.

MONDAY, DEC. 19

1 p.m. Senior Citizens Club sponsored by Essex County Parks Commission —

Belleville Ave. in the park.

7:30 p.m. School No. 5's Christmas program featuring a fifth and sixth grade chorus and a play by the third grade entitled "The Santa Claus Parade" — School No. 5 auditorium.

8 p.m. Board of Education monthly business meeting (open with full public participation) — 383 Washington Ave.

8 p.m. Knights of Columbus. — 98 Bridge St.

8 p.m. Elks Lodge meeting. — 383 Washington Ave.

8:15 p.m. Regular monthly meeting of the Belleville-Nutley Chapter of Hadassah — 105 North Road, Nutley. Members are asked to bring memorabilia and family heirlooms and to share memories.

TUESDAY, DEC. 20

1 p.m. Belleville Senior Citizens Club. — 125 Franklin Ave.

6:30 p.m. Branch Brook-Belleville Kiwanis Club. — Parillo's Restaurant, 104 Harrison St.

7 p.m. Christmas films: "The Night Before Christmas" and "The Great Toy Robbery" — Belleville Public Library, 221 Washington.

WEDNESDAY, DEC. 21

9:30 a.m. Belleville Retired Men's Club. — Fewsmith Church, 444 Union Ave.

12:15 p.m. Belleville Rotary Club. — Chandelier Restaurant, 340 Franklin Ave.

7:30 p.m. Christmas program — Belleville High School Auditorium.

8 p.m. Italian-American Civic Association and Auxiliary — Montgomery Church, Mill St.

Thought for today

Religion will calm our nerves, quiet our fears, and disarm our souls. Religion will keep us cool and brave, enable us to look up upon life with all its hazards and threatening possibilities, and will even help us to live through the grimmest of these with the arm of courage. Religion is what makes us feel bigger inside than we really are. Religion will do all of these things and many more, but only if we know how to take it and how not to, how to use it and how not to abuse it. Religion is not a magic protecting us from difficulties, but a power that will enable us to rise above them when we learn to let God work in and through us.

the Belleville
times/news



Publisher
FRANK A. ORECHIO

News Editor
BY PHIL WHITE

Social Editor
HELEN MAGUIRE

Published every Thursday
at 246 Washington Avenue
Belleville, New Jersey, 07109
Telephone: (201) 759-3200

perspective

GOLDEN COMMENTS

Good choice in new BHS principal

By JAMES GOLDEN

This columnist stands abashed and ashamed at the overemphasized emotional reaction of the local press in its unparalleled laying of disparaging stress upon the fact that the Belleville Board of Education, by majority vote and upon the recommendation of Dr. Greed, the Superintendent of Schools, appointed an educator from without the local school system.

Blaring headlines "New HS Principal an Out-of-Towner" and derisive references, in another local paper, alluding to the newly appointed high school principal's background history in an uncomplimentary light, merely smacks of pandering to the well organized "power play" demonstrations of local political and educational groups bent upon "imposing"

their will upon duly elected school trustees and a professional educator, Dr. Greed, who, upon the recommendation of a select Board of Education School Superintendent Selection Committee, was duly selected as school superintendent, notwithstanding that he was not from within the local school system, thus breaking an hierarchy of "going through the chairs" tradition in the local system in determining the selection of school administrators in the town of Belleville.

Traditionally in most communities, and Belleville is no exception, a superintendent is hired to determine the qualifications of teachers and other personnel within the school system. Dr. Greed, conducting himself in the finest professional traditions of a school superintendent, imparted his recommendations to the school trustees.

By a 4-3 vote the Board resolved the matter after careful evaluation and observation of the respective candidates by subscribing to Dr. Greed's recommendations.

With new Board member Ralph M. Risoli, who is distinguishing himself as a welcome catalyst on the Board despite meager recognition from the media, serving in the van to institute a new dimension of excellence in the Belleville school system. He was joined by other independently minded school trustees Richard Maharian, Michael Chieffo and Matthew Pica in the appointment of Mr. John DeCesare who will be moving to town with his family. It might be noted that none of the other candidates seeking the appointment, despite the inference that they were Belleville residents, live in town, nor was there any indication that they

would do so were they to get the appointment.

Just as we chided the town commissioners, with the exception of Comm. McGreevy, for getting involved in what should have been exclusively a matter for the school trustees to resolve without any political connotations. We question the propriety of Comm. Senatore's dispatching a political representative to inject her predilections as to whom should be chosen. Could she have been "playing to the gallery" for political reasons?

It is noteworthy to observe that the three school trustees who voted along the sentiments shared by Comm. Senatore in opposing the appointment of the new high school principal, Mr. DeCesare, are often thought to be in the political camp of the lady commissioner and suspected of

benefiting, in their election efforts, by her support.

Predicated upon information from usually reliable sources, we gained the impression that Trustee Schwartz had implied he would vote for Mr. DeCesare. We admire his acknowledgement that the new high school principal is eminently qualified, but are puzzled by his negative vote by citing the abstruse, ambiguous explanation that "overriding reasons" prompted his no vote. We ponder, could it have been political pressure?

Whatever motivative factors may have been injected into the controversy, for whatever reason, let us all now bind our differences in harmony in the hope and expectation that our school system and our children will benefit from the outcome.

RECOLLECTIONS OF BELLEVILLE HIGH SCHOOL

Ms. Schneider didn't treat me like a statistic

By LAUREN VITIELLO

There is an exceedingly tall woman with a mild space between her incisors. She has large blue eyes, small ears and lobes, and I think she lives in room 104 of the Belleville Senior High school.

Whenever I sought academic help, she was there. When I was traumatized by the realization of my pubescence, she was there to listen to my pointless babble. Three years after my graduation and she still receives me at 3:00 p.m. as I crawl through the window, again to resume my pathless monologue.

Room 104 is situated a calling distance from the administrative wing. The guidance department arranged this to ensure themselves direct assistance from a scholar who has attained more insight than their cumbersome files could accumulate.

It is ignorant to deny the inefficiency of the highschool's guidance department. (Do you know it is common for Counselor A to phone Colleague B - who's office adjoins his - receive a busy signal and try again in the morning?) It usually isn't until senior year that someone, somewhere, decides to inform students formally of a post-graduation opportunity.

My experiences with this paragonically limb of the administration were generally negative. Even the secretary seemed apathetic. Perhaps five times I entered her office, and by the third visit, I became familiar with the script:

"Who is your Counselor?"

"So and So."

"Do you have an appointment?"

"No."

"He's with another student. Sit down and wait."

As I move past her towards the waiting area, I spy for a waterbowl inscribed "Fido." I think, "Shouldn't this woman be on a leash?"

(Actually, she was an excellent worker, who I am sure is a master of organization.) What now? There are about five hundred books and catalogs (shelved alphabetically) in this large outer office. Can I read them? Doesn't the staff realize that there still exists the prototype of a scared innocent teenager? If an authority figure does not prompt me, I will never leaf through the pages of these catalogues which can be so valuable to me.

As I sat in that office I wanted so badly to approach that secretary and confidently declare, "You know, I attended my first period class; I didn't cut just to have a cigarette and a cup of coffee at 'Rosebuds' (the candy store)." I continued to wait and thought of dropping school altogether to pursue a filing career at the Mutual Benefit Life Insurance Company.

Entering So and So's office is even less encouraging: "Go to Upsala (UP-SA-LA) College; they have a great football team."

"Thanks coach. See you on the twentieth yard line. (Is this academic counseling?)"

I slip back to room 104. Anne Schneider talks to her students and recognizes their capabilities without the aids of a private office, or secretive files of Iowa test, Intelligence Quotients, or PSAT and SAT scores. (These are insignificant to a radically maturing highschooler.) She does not analyze one's scholastic status and prescribe a selected level of achievement to attain.

She told me what any human needs to hear that I was a brilliant person and can achieve whatever I desire.

It is irrelevant that Ms. Schneider says this to hundreds of students and reiterates her advice annually. What matters is, she does say it, and more importantly, she believes it. Her philosophy is epitomized by her teaching abilities, she expects performance from her students, and generally, they deliver it. (And regardless of how often I tap at the window of room 104, she always welcomes me, slips off (at least one of) her shoes and commences to listen.)

Of course, this essay contains half-truth and exaggerations. It is not meant to degrade specific secretaries or Counselors So and So. The cynicism is intended merely to highlight the idealism of Anne Schneider.

It is important to notice the faults of an administrative bureaucracy, but to be truly liberal, I must be able to fend for the party I have criticized. Firstly, I am grateful to the mere existence of a guidance department. The So and So's are not personally

acquainted with me, so they deal with me in the best way possible. I might only be a statistic, but complied with several others I can become a forerunner to an improvement or at least an idea. The department does provide the materials and information for post-graduation activities; they are there for the asking. (I only wished I had been asked to ask.)

As for Ms. Schneider, I only wish to thank and flatter her. She has impressed me morally and academically. Nothing

more could have been asked of her since she gave everything that is of value. The woman is a scholar and a friend-the ideals of a dedicated teacher I am not a filing clerk at the 'Mutual'; nor am I an honor student in an ivy-league university. I am simply content in knowing I have been influenced by a brilliant philanthropist.

Lauren M. Vitiello
Class of 1975
Tiona Ave., Belleville

Legion Auxiliary appreciates veterans' parade support

To the Editor:

It is my personal opinion that all Veterans be remembered at all times, not only on Veterans Day. The Ladies Auxiliary of the American Legion holds this obligation first in their programs with children, the aged, the ill and the handicapped the very next.

I am proud to be part of the work and the good the Essex County American Legion and our Auxiliary perform all year.

Keep in mind that our organization is a non-profit organization, constantly contributing to the comfort of the above mentioned. Time, money and the

material things donated by the members adds to the success of our great organization.

To all of our members, and friends of the American Legion, I thank you for your part in trying to make the recent Veterans Day Parade a success, and the many fine jobs you have done in the past.

Veterans are our business — we dare to care!

Respectfully,
Florence De Angelis,
President of Essex County
American Legion Auxiliary

TRUSTEES PAID NO ATTENTION TO PUBLIC AT HEARING

Unconstitutional vote on principal?

To the Editor:

We are genuinely concerned parents seeking the betterment of education for our children through the public schools of Belleville, N.J.

Through our search of ways and means to accomplish better education for our children, we are quite involved in the parents' organizations and associations within the Town of Belleville. In retrospect, our three sons have come up through the grades and are presently enrolled in three different public schools in town. This involvement and interest in our children's education gives us some knowledge and understanding of the bureaucratic structure of the system, its political ramifications and workings. Further, knowledge and questions pertaining to the education of our kids have always been satisfactorily answered by teachers, administration and the Board of Education members.

We have always found the school system extremely receptive to our inquiries about teaching-education and other related issues concerning our kids. This is a tribute to the many fine teachers and administrators within the system who are truly dedicated.

Constantly we read about the "good ole days" and the dedicated teachers of the past. We feel certain that we do have a large number of educators today equally concerned and dedicated. Are the critics

aware of the following statistics to help substantiate our belief and support of educators today?

In 1910, persons 25 years and older averaged 8.1 years of schooling. In 1950, the figure rose to 9.3 years, then jumped to 12.3 years in 1974 and is still rising. The curriculum at Harvard during its early years was most similar to what we are teaching grades 7, 8 and 9 today. The national assessment of educational progress reports, nationwide, more than 63,000 students ages 9, 13 and 17 were tested on the same reading skills in both 1971 and 1975. Those in the 13 and 17 year age groups were reading and progressing just as they did four years previously. The 9 year olds showed a substantial increase in reading ability and skills. We understand the Belleville system stands "head n shoulders" above the national assessment.

Further, as taxpayers, we are all concerned about the high costs of education and the pay teachers receive. I feel those who destructively attack are not being realistic. Teachers do earn their money and should receive professional wages. Our kids deserve the best and to get quality educators, we must pay.

Now let's get to the point at hand and the Board of Education meeting of Monday, Nov. 28, 1977 at School No. 4. The Belleville Times reported that in excess of three hundred people were present at that

public meeting. Speaker after speaker addressed the Board regarding the vacancy of principal of the high school. It seemed that the Board members listened intently to each speaker. However, the anticipated voting of 4-3 in favor of a gentleman from Pennsylvania came about as predicted by this newspaper a week prior to the meeting. In fact, the Superintendent of Schools emphatically stated that the prospective applicant from Pennsylvania was in town this past week-end already looking for a house to purchase.

In that regard, we feel the superintendent and others who may take the "will of the people" too lightly are in direct conflict with the Constitution, the N.J. statutes, specifically Title 18A. Elected officials and their appointees who come to decisions prior to adequately hearing the voices of their constituents will eventually "stand alone," particularly during election time. Yes — it is our humble opinion that true democracy was not the modus operandi that evening and the citizens will eventually react accordingly. What seemingly permeated the tone of the meeting were "back room deals," character assassination of the past superintendent who was not present, unfair labor practices in accordance with "due process" and "affirmative action."

The demoralizing effect upon the instructional and non-instructional staff of the Belleville School System shall take its

toll from that evening's happenings. To bypass qualified persons from within the system is inconceivable, especially a person who possesses the professional qualifications of Mr. George Nucera, the assistant to Mr. Smith, past principal of Belleville High School, seems ludicrous to us. The shallow excuse of not residing within the town is weak and without substance. This prerequisite is contrary to state law and discriminatory. Are teachers and present administrators required to live with the Town of Belleville? We understand that many of the teachers and those recently hired don't live within the town. Policy dictated by the Board of Education should be consistent. When mandates vacillate for one group and not the other, discrimination is the charge. Quality and dedication of teachers has little or no correlation with place of residence. In fact, current data indicates that in most suburban areas, teachers not residing within the district perform equally, or better than those who reside within the district.

The excuse of non-residency for Mr. Nucera is nonsensical and insignificant. This man has served and "paid his dues" for well over twenty years in the system. He knows the high school, but was never given the authority or position to "captain the ship." The gentleman from Pennsylvania will take the length of his contracted time (up through June, 1979) to really know the system — its community,

teachers, and most importantly, our students.

Finally, the board was polled that evening and the votes were cast. The votes indicated to the community that some members of the Board voted in "accordance with their conscience." One Board member intimated that pressure from the Commissioners of the Town will have no bearing on his vote. This certainly sounds "heroic" — except when election time comes. Why do some Board members go out of their righteous path and seek the support of the Commissioners?

"This above all: to thine own self be true, and it must follow, as the night the day, thou canst not then be false to any man."

William Shakespeare
Time will tell and our waver is on the "will of the citizens". Contrary to the belief of some, Belleville is an informed, intellectually oriented community. Its citizens have roots which perpetuate the "finest and most cultured peoples that history has ever recorded. Hopefully, this is known to those who attempt to exploit our young and "hop" from one district to another.

This shall not be tolerated.

Educationally yours,
Mr. & Mrs. Anthony D'Agostino
19 Dorothea Terrace
Belleville, New Jersey

social news

Christmas will be no holiday for unwanted cats and dogs

Silent night... lonely night... homeless night... cold night. It's not holiday for the thousands of unwanted, abused and abandoned animals that are homeless this Yuletide season.

If you are looking for a special Christmas gift that says "I Love You" all year 'round, the Associated Humane Societies may have the perfect choice for you. The Society has hundreds of puppies, kittens, dogs and cats. If you are thinking of putting a little love into someone's life, make sure that a pet would be a welcome and wanted addition to the family and that there will be no problems with the landlord. If you don't want to make the selection yourself, the Associated Humane Societies has gift certificates and would be happy to advise you on the best type of pet to suit the individuals' needs.

If you are lucky enough to have a pet of your own, please be sure that holly berries and mistletoe are kept out of reach of animals as they are poisonous if consumed. Broken ornaments, cracked bulbs, tinsel and icicles can cause injury and intestinal blockage.

The Associated Humane Societies maintains three regional facilities at 124 Evergreen Avenue in Newark, near the Newark International Airport, at 2960 Shafto Road in Tinton Falls, near the Rt. 33-34 Circle and at Lacey Road and Humane Way in Forked River, 8 miles south of Toms River. The Society is open seven days a week. If this is not convenient for you check your local telephone directory for the closest humane shelter to you or you can call the Society for more information.



Precious Gifts — Brighten your holidays by brightening an orphan's life. Give a homeless cat or dog the most precious gift of all, the gift of life. The male pup was brought to the Society by a Nutley owner (file #86404) and the male kitten (file #86162) is from Kearny.

Christmas trees that are cut fresh will last longer

Mountains of pine and spruce trees are being sold for Christmas. Many of these trees were cut weeks ago and shipped long distances.

If you live in an area where you can get your Christmas tree from a local grower, you can be assured of a fresh tree by going to the farm and cutting it yourself or having it cut when you call for it. In either case, what you do with the tree after you get it home will determine its appearance and safety when you set it up indoors.

Mr. William F. Munk, senior county agricultural agent in Essex County, has some tips on how to maintain good tree color, reduce needle drop, and keep the tree moist and more resistant to fire.

When you bring your tree home from the market, place it in a bucket of water outdoors or in a cool place until you are ready to decorate it. Exposure to snow or rain won't hurt it but heat will dry it out and cause the needles to drop early.

When you're ready to bring it indoors, make a fresh cut across the trunk about an inch above the original one. The tree will absorb more water.

Place the tree in a container or tree holder filled with water. Never place the tree near a fireplace.

Keep the cut surface covered with water at all times. A tree in a warm room may use a pint of water a day. The larger the container the fewer times you have to fill it.

Mr. Munk said the United States Forest Products Laboratory investigated the benefits of fire-retardant chemicals on Christmas trees and concluded that keeping the tree standing in water is about the most practical, satisfactory, and convenient method for reducing fire hazards and preventing the needles from discoloring and falling.

However, if you want to go one step further and it gives you peace of mind to know you're exercising every precaution against fire hazards, here's a simple formula to spray on your tree and Christmas greens.

Mix nine parts by volume of sodium silicate (water glass), which you can buy at most drugstores, with one part of water containing a laundry detergent. Use about one teaspoon of the detergent for each quart of water.

You can apply the solution by using a garden sprayer, vacuum cleaner, or paint sprayer, or you can dip whatever you want protected in the solution.

House Mastery

by Dr. J.G. McNeill, P.E.

Electricity is one of the most awesome forces the homeowner can command. Control of this power is exercised every time you throw a switch, plug in an appliance, turn a fixture knob.

- To keep this awesome power at your fingertips, however, requires a knowledgeable respect for four major factors.

- The insulation that confines electricity to your system.

- The jacketing or sheathing that keeps external forces from damaging the insulation.

- The breakers, switches, outlets, and other devices that permit you to transfer power to the lamps, motors, and other units that do the work.

The amount of work you demand from each unit.

Starting assuring your command at the source — the cable that "drops" power from the utility's transmission line to your home. Usually it runs overhead to the nearest high spot on your home where it joins with the service entrance cable that goes through the meter to the main switch.

Just look at the drop cable from the ground. It is still secured to an uncracked, solid portion of the house! Are any tree branches encroaching on it? Have squirrels, birds, or bees built nests that touch it. Is any frayed wire covering hanging loose? If you see any problems, notify the utility.

Don't ever touch the cable or go near it with a metal ladder. Don't let contractors work near it with backhoes, drilling rigs, or other tall equipment without first requesting the utility for a temporary disconnect.

Notify the utility if you raise a driveway beneath it, fill in low spots, or in any way decrease the original clearances below the cable.

If you have a buried service cable running to a nearby transmission pole, it's likely to be deep and protected. Nevertheless, assume a straight path from your meter to the pole and make sure no digging, trenching, or stake-driving takes place along that line.

If entire lighting circuits start burning significantly brighter or dimmer — call the utility right away. It could be a loose connector at the transmission line. But fixtures and appliances in the home could be damaged while it's loose. Next week: What's in the box?



Nina DiTrapani - Joseph Rubino

Nina DiTrapani will marry Joseph Rubino next October

Mr. and Mrs. Frank DiTrapani of 50 Cedar Hill Avenue announce the engagement of their daughter, Nina, to Joseph Rubino, son of August Rubino of Newark and the late Mrs. Ann Rubino.

The troth was made known at Horn of Plenty Restaurant, East Hanover.

Miss DiTrapani, an alumna of Belleville High School, is a secretary with Municipal Sanitary Landfill Authority.

Mr. Rubino, a graduate of St. Stanley's High School, Newark, is an orthopedic orderly at St. Michael's Medical Center, Newark. The wedding will be held October 22 of next year.

Introcaso-Annese betrothal told; wedding in the spring

Mr. and Mrs. Joseph Introcaso of Belleville announce the engagement of their daughter, Maryfran to Dennis C. Annese, son of Mr. and Mrs. Anthony Annese of Scotch Plains.

Miss Introcaso, an alumna of Mt. St. Dominic Academy and Katharine Gibbs School, is a secretary with Curtis Circulation Co., West Caldwell.

Mr. Annese, a graduate of Thomas Jefferson High School, Elizabeth, is owner of mens' clothing stores, Tony Dennis, located in Elizabeth and Westfield.



Maryfran Introcaso

Marilyn Gauthier, Ronald Puttorak will be married

Robert Louis Gauthier of 10 Reservoir Place announces the engagement of his daughter, Marilyn Joan to Ronald Edmund Puttorak, son of Mr. and Mrs. Edmund Joseph Puttorak of 9 Pleasant Ave.

Miss Gauthier, daughter of the late Mrs. Frances Jeanne Gauthier, is an alumna of Archbishop Walsh High School, Irvington. She is with N.J. Bell Telephone Co.

Mr. Puttorak, a graduate of Belleville High School, is with Mutual Benefit Life Insurance.

The wedding will take place June 17, 1978.

D'Amicos celebrate silver anniversary at dinner party

Mr. and Mrs. Joseph D'Amico of Belleville celebrated their silver wedding anniversary Nov. 26 at a party at The Manor, West Orange. The affair was hosted by their sons, Michael and Antonio and daughter, Karen.

The couple was married Nov. 30, 1952, at Immaculate Conception Church, Newark. Members of the wedding party, Michael Dellaguzzo, best man and Eleanor Hahn, maid of honor, were also in attendance.



National award — Harry G. Elmstrom, president of the National Association of Realtors, congratulates Lucietta Monteleone, chairman of the Bloomfield, Glen Ridge, Nutley and Belleville Board of Realtors' "Make America Better" Committee. The boards entry in the association's "Make America Better" contest was selected as best entry in the vandalism prevention category. Mrs. Monteleone accepted the plaque on behalf of the Board at a luncheon in Miami Beach, Fla. She is owner/realtor of Montell Agency, Belleville.

Sixth grade students Auxiliary president visits District #4

Students of Louis Delia's sixth grade class at number Seven School are official entrants in a world-wide economics contest.

The contest, sponsored by Wheelabrator-Frye of Hampton, N.H., is based on "The Golden Goose," a special annual report written in simplified language for young people. The contest will test students' knowledge of how business works and produces jobs.

Response to the contest has already come from all 50 states and 14 foreign countries.

Fifty winning classes will each receive a cash prize of \$100. Each school and teacher who produces a winning class will also win a special trophy and prize.

Veterans of Foreign Wars Dept. of N.J. Auxiliary president Marguerite S. Losey of Newton made her official visit to District Nov. 27 at a meeting held at Roseland-Caldwell Memorial Post 2619, Roseland.

District president Barbara Ellmer of Bloomfield welcomed the state president and her staff and a buffet supper followed the meeting.

Attending the meeting were Younginger-Aldan Jr. Auxiliary, Belleville, were Anna Fernicola, president; Bertha Zienkiewicz, Jr. vice-president and Theresa Singer, treasurer.

Wheelabrator-Frye is a world-wide FORTUNE 500 manufacturing company.

First grade math emphasizes basics, reviews concepts

The Math Curriculum set up for first graders of Belleville cover a wide range of objectives. The basic skills that are developed consist of: number concepts, addition and subtraction facts up to ten, rote counting, place value, and other concepts such as, the calendar, telling time, value of money, shapes and measurement.

After a lesson is taught, pupils are expected to complete a specific task, which is a review of all the skills and concepts taught. This review is also used to evaluate a student's progress and achievement.

Junior High PTA Card Party Jan. 6 at the Fountain

Belleville Junior High School PTA will hold its annual card party and fashion show Jan. 6 at the Fountain, Belleville. The affair will begin at 7:30 p.m.

Tickets may be obtained from Mr. Lally at the main office at 751-3440. Donation is \$4.50.

Umberto's Corner

Q. Dear Umberto,

I gave lots of permanents to my mother and relatives. When I gave a permanent to my cousin, what happened I still can't believe. When I put the lotion on it turned white and when it was put on it turned purple. My cousin got hysterical and I got worried. I thought I did something wrong. We immediately washed out the lotion. What could have happened? She wants the permanent but we are waiting for your answer. So hurry!!

Faithful readers,

The Two Cousins from Poland

A. Dear Jack Sie Masz,

I hope that one week is soon enough for your answer. This phenomenon happens when on the hair in the pores there is a presence of metallic salts. When it comes in contact with the permanent lotion, the lotion will become purple. Don't worry, nothing will happen to your hair. It is just a color. To avoid this, wash the hair with a good shampoo and this will take it out. Proceed with the permanent.

Umberto

MY WEEKLY BEST TO:

H. Capella, Bebra, MtCowan, Carol Templeman, Rose Gaeta, Cathy Ryan

Umberto of Naples

OPEN SUNDAYS

BY POPULAR DEMAND

547 Washington Ave., Belleville

753-6111

Winner of European Hair Cutting Contest

PARK MANOR

NURSING HOME

Dedicated to Better Patient Care

Specializing in Female Patients

PROFESSIONAL PERSONNEL STAFF

RECEIVED 1976 N.J. AARP

PHYSICAL THERAPY

ON-SITE MEDICAL EQUIPMENT

SPECIAL TREAT

- BATH
- COMFORTABLE
- PERSONAL ATTENTION
- COST EFFECTIVE

23 Park Place, Bloomfield

743-7772

200 N. American National Drive

ELECTROLUX

For powerful, quieter super cleaning with automatic efficiency.

998-1011

597 Ridge Road

North Arlington, N.J.

IMPROVE YOUR APPEARANCE
LET US HELP SELECT THE
FRAMES TO COMPLEMENT YOUR FACE

- NEW STYLE FRAMES
- LIGHT WEIGHT LENSES
- NEW TYPE OF CATARACT EYEGLASSES
- MEDICAID AND MEDICARE ACCEPTED

Valenza Opticians

of Nutley

Where every patient becomes a friend!

357 FRANKLIN AVE

661-3451

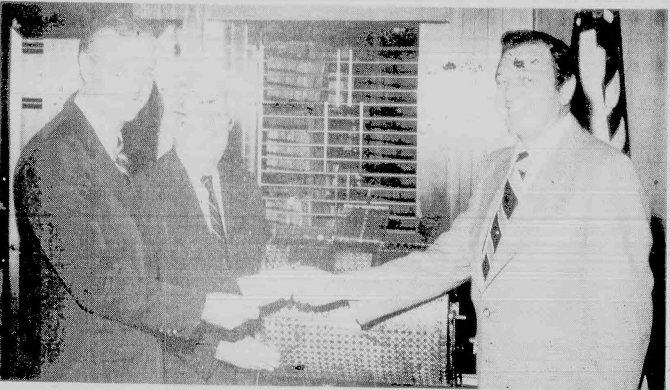
SENIOR CITIZENS AND UNEMPLOYED PERSONS GIVEN SPECIAL CONSIDERATION

OPEN MORE HOURS FOR YOUR CONVENIENCE INCLUDING WED. & SAT.

ALSO MON. AND FRI. TILL 8:30



Merger Prizes — Henrik Tvedt, president of First DeWitt Savings and Loan Association; John P. Dailey, chairman of the Bank, and Mayor Michael V. Marotti were on hand for the drawing to select winners of door prizes at the bank's recent merger celebration. The drawing was held at First DeWitt's main office at 463 Washington Ave. Prize winners include Mrs. Lillian Berkowitz, who won a color TV set; Marc Beilin, recipient of American Tourister Luggage, and Mrs. Rhoda G. Curran, who won a Kodak Instamatic Camera.



The Mayor's Choice — Bloomfield Mayor John Kinder selects a winner in the First DeWitt Merger Celebration while Henrik Tvedt, bank president, and John Dailey, bank chairman, look on. Here, at First DeWitt's Bloomfield Center office, along with branches in Belleville and Bloomfield, customers opened many new accounts and received hundreds of free gifts. In Bloomfield, the prize winners were Janet Romeyn, who won a microwave oven; Raymond Waskiewicz, the recipient of a luggage set, and Wally Tendrick, the new owner of a camera.

Insurance dominates brief board meeting

The Belleville Board of Education gathered Monday night for one of its shortest meetings in several months.

Two trustees did not attend the public executive session of the Board — President Caesar Romano was excused because of illness, while Trustee Richard Mahmarian was unable to make the meeting because of prescheduled business.

Except for several items presented by Dr. John Greed, superintendent of schools, and by one or two trustees, the core of the meeting surrounded the session with Philip Lieberman, insurance agent for the Belleville Board.

Lieberman, who handles property insurance for the Board, as well as an umbrella liability policy approved early this fall, asked the board to submit up-to-date values of all board-owned buildings as soon as possible.

"Pending your decision whether or not to hire an appraiser, I suggest that you allow us to increase your building values according to an estimated increase factor," Lieberman noted, adding the board could arbitrarily determine such an estimate.

Trustee Matthew Pica recommended the board not make the estimate arbitrarily, though, and fellow board member Lawrence Schwartz suggested an appraiser be retained.

In fact, the board was scheduled to meet with G. Fred Burlazzi concerning the appraisal of school-owned properties Monday, but Burlazzi cancelled the meeting due to other commitments.

If the board decides not to retain the services of an appraiser, it will have to determine an estimated increase factor soon, since Lieberman's initial request for this dates back to June of this year.

The estimated increase factor reflects the increase in construction cost today over what it was a year ago, so that the total amount of the figure necessary to replace a piece of property should it be destroyed.

You'll find what you need at
DEPENDABLE
VARI JEWELERS
12 Ridge Rd. No. Arlington
998-0707

Say "Merry Christmas" with...

Poinsettias

HAUCK'S GREENHOUSES
47 MONTGOMERY STREET
BLOOMFIELD
"Where Beauty isn't Priceless"

A Perfect Gift at the RIGHT PRICE

LIVE POINSETTIAS
WREATHS & BLANKETS

Gala New Year's Party

PRESENTED BY
MOMS CATERERS
ITALIAN FIORENTE SOCIETY
34-36 CARMER AVENUE, BELLEVILLE

NINE P.M. UNTIL ?
OPEN BAR - HOT AND COLD BUFFET
CHAMPAGNE TOAST NOISE MAKERS ETC

PLUS EXCITING MUSIC OF
"BITTER SUITE"

\$20.00 PER PERSON
NO EXTRAS

FOR RESERVATIONS
438-9487

L. Burrell is graduated from Police Academy

Leonard J. Burrell, son of Mr. and Mrs. Leonard W. Burrell, 38 Kings College in Wilkes Barre, Pa. He is also a member of the Belleville Crescent Terrace was graduated Auxiliary Police Department. from the Bergen County Police Academy, Mahwah, Nov. 11.

Burrell is presently employed as a Patrolman Burrell is a graduate police officer with the New York, of St. Peter's School, Essex Catholic Susquehanna and Western Railroad, High School, Newark, and attended Edgewater.

Janette Nutley Center

NUTLEY CENTER
Nutley, New Jersey 07110
201/667-1900

Dear Bride-to-be,

We invite you to fully use the many distinguished services we have for our brides-to-be. It is not by chance that we are recognized as "Bridal Headquarters" in our state.

We are dedicated to serving the needs of our brides with authoritative counsel, warm and friendly understanding, and the know-how to make each wedding perfect in every way.

Each bride-to-be is very special to us and we want all to feel that they are a "quasi in our home". We take special pride in helping the bride-to-be in the coordination of silver, china and crystal. A beautifully arranged table becomes a stately setting for the new hostess, and our wide selection makes choosing the "just right" pattern a pleasure.

We at the Janette Nutley Center offer our expertise in the hope that your wedding will be the beginning of a fulfilling life.

Planning for a successful wedding can be an arduous task and takes much thought. There is much free literature available covering every facet of planning to make your wedding the gracious and glamorous occasion it should be.

Please be assured that we will do everything in our power to make this "most special occasion" a most successful one.

Call today for a special appointment.

Sincerely,
Janet Magnatta
Bridal Consultant

HOLIDAY LOANS HARD TO GET? HUMBUG! \$500 TO \$50,000
"IF YOU OWN A HOME & WANT A LOAN"

I SAY "O.K." When Others Say "NO WAY"

This Holiday season — Whether The Reason — The "O.K." Man at Provident will loan you the money. If you've got lots of cash and equity ANY financial institution will approve your loan. But, when you really need a loan — and need it fast — call the "Man at Provident". He'll say "O.K." when others say "NO WAY".

SIMPLE INTEREST LOANS
\$500 TO \$50,000
TO USE FOR ANY REASON...

- DEBT CONSOLIDATION
- TUITION
- HOME IMPROVEMENT
- COLOR T.V.
- BUSINESS INVESTMENT
- TAXES
- AUTOMOBILE & HOUSE PURCHASE

LOANS FOR ANY REASON AT ALL!
Give our "O.K. Man" a call. Take up to 120 months to repay your loan. There's no prepayment penalty at Provident Investment Corporation.

the HOMEOWNERS MONEY CENTER!
There's an "O.K." waiting at...
PROVIDENT Investment Corp.

373 Bloomfield Ave. 440 Route 23 419 Essex St.
BLOOMFIELD, N.J. POMPTON PLAINS, N.J. WACKENHAUSE, N.J.

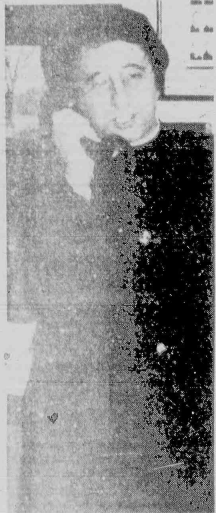
429-7500 839-4300 488-3030

TM OWNED BY THE HOMEOWNERS MONEY CENTER
SECONDARY MORTGAGE LOANS
OR CALL TOLL FREE 800-932-0223

Fr. Marcone Appointed New North Essex Dean

The Rev. Eugene Marcone, formerly of St. Mary's Parish, has been appointed the dean of the North Essex Deanery, which comprises St. Mary's, Belleville, Bloomfield, Middletown and Upper Merionide.

From Newark, Rev. Marcone was named with the direction of the St. Mary's Grammar School while here as well as serving as Procurator.



Taking Charge — The Rev. Eugene Marcone, A.T., new dean of the North Essex Deanery, is the Archdiocese of Newark. He is a member of St. Mary's Parish.

Marcone at Tribunal — The Rev. Marcone, in his new position, is the Archdiocese of Newark. He is a member of St. Mary's Parish.

Marcone replaces the Rev. Vincent Cozzarelli, formerly of St. Mary's Parish, who recently died.

Crew supporters planning dinner

The Belleville Parent and Alumni Association is sponsoring a dinner for the crew members of the school's crew team. The dinner will be held at the Chandelier, 343 Passaic Ave., Jan. 21.

The dinner will start at 7:30 p.m. with a social hour, followed by dinner and dancing until midnight.

Reservations are advised by the end of the month. Mrs. Joyce Davis, 1500 Passaic Ave., is in charge of arrangements.



Pharmacy Footnotes
Vincent Cozzarelli
Reg. Ph.

Through their organizations, the American Association of Professional Nurses, the American Association of Nurse Practitioners, and the American Association of Nurse-Midwives, there are six of the most important and approved organizations in the world. Requirements for the profession include a college degree, four years of an associate degree and one or two years of internship at an approved hospital.

Wares of ROSSMORE and ROSSMORE 236 Washington Ave. Tel. 468-759-1956 include a variety of gifts for all your loved ones. We have a gift department with Christmas cards and other items. Hours: 10 a.m. to 10 p.m., Sundays, 10 a.m. to 12 p.m.

HELPFUL HINT:
Use butter to remove chewing gum from a child's hair.

Frederick Hage in naval training

Frederick W. Hage, nephew of Joseph Romano, 176 Bremond St., Belleville, attended the Farragut Summer Naval Camp.

The camp is operated by the Admiral Farragut Academy, Pine Beach, America's first preparatory school offering naval training for boys ages nine to 16.

Campers participated in a full program of land and water activities during the training. The camp has a fleet of 50 boats plus complete athletic and academic facilities.

If you love your parents you will not disgrace them, and if they love you they will forgive you even this.

—Lord Haddock



Town Historian — Belleville Historical Society president Bob McFadden (left) presents a portrait of the late Allan H. Crisp, the society's founder, to Belleville Public Library director Gerard Hickey. Looking on is Crisp's widow, Nancy. The presentation took place at the library Sunday. Crisp, who wrote a column for the Times/News, was known as Belleville's town historian. The painting of Crisp, by Dave Wyka, was commissioned by the Historical Society.

GOOD SUN., DEC. 11, THRU SAT., DEC. 17, 1977

Two Guys® SUPER SUPERMARKET®

PERDUE
FRYING CHICKEN
WHOLE **49¢ lb.**
Cut Up **55¢**

GOV'T INSPECTED
FRYING CHICKENS
WHOLE **37¢ lb.**
Cut Up **43¢**

P.Z. BRAND
ITALIAN SAUSAGE
HOT OR SWEET
99¢ lb.

GOV'T INSPECTED CHICKEN
BREAST **49¢ lb.**
LEG **49¢ lb.**
GOV'T INSPECTED 3 1/2 lb. AVG.
ROASTING CHICKENS **45¢ lb.**
U.S.D.A. CHOICE BEEF
LEAN CUBES OF
Beef For Stew **1.39 lb.**
U.S.D.A. CHOICE BEEF-FIRST CUT
Chuck Steak **69¢ lb.**
U.S.D.A. CHOICE BEEF
SEMI-BONELESS
Pot Roast **1.09 lb.**
FRESH LEAN
Ground Chuck **99¢ lb.**

PEPSI-COLA
REG. OR DIET (2 LITRE)
69¢

BOUNTY DESIGNER TOWELS
NEW 100 CT. **59¢**

AUNT JEMIMA ORIGINAL PANCAKE MIX
32 OZ. BOX **49¢**

AJAX CLEANSER
21 OZ. CANS **3 \$1**

FRESH PRODUCE
WASHINGTON STATE RED OR GOLDEN APPLES OR ANJOU PEARS
39¢ lb.
JUICY-FLORIDA TANGERINES
150 SIZE
15 \$1
CARTON OF 3 OR 4
Tomatoes EACH CARTON **39¢**
PASCAL LARGE TAIL **49¢**

GREEN GIANT SALE
NIBLET'S CORN **25¢**

TWO GUYS ROUND OR SQUARE WHITE BREAD
NO PRESERVATIVES
3 \$1

AUNT JEMIMA PANCAKE SYRUP
24 OZ. BTL. **99¢**

COUNTRY SQUIRE RAISIN BREAD
1 lb. **2 \$1**

KITCHEN SLICED OR FRENCH GREEN BEANS **89¢**

POPE VEGETABLE OIL **2.99 GAL.**

POPE TOMATO PUREE **49¢**

POPE ROASTED SWEET PEPPERS **49¢**

POPE (DECANTER BTL.) WINE **47¢**

Vinegar **47¢**

FROZEN FOOD DEPT.
SAVE 50¢
ELIO'S CHEESE PIZZA
NINE SLICE **1.19**
SAVE 20¢
GREEN GIANT VEGETABLES
10 OZ. PKG. **39¢**
SAVE 20¢
CHOCK FULL NUTS
Pound or Marble Cake **89¢**
SAVE 10¢
ORE-IDA
Shoestring Potatoes **59¢**
SAVE 20¢
WHIPPED TOPPING
GORTON BATTER-FRIED **49¢**
SAVE 20¢
FISH STICKS **89¢**

DAIRY DEPT.
SAVE 24¢
IMPERIAL MARGARINE
1 LB. PKG. **59¢**
SAVE 20¢
MR. APPLE CIDER
1/2 GAL. CARTON **59¢**
SAVE 20¢
PLAIN YOGURT
COLOMBO **79¢**
SAVE 10¢
BREAKSTONE REG.-LARGE OR SMALL CURD
69¢
SAVE 10¢
COTTAGE CHEESE
HEART OF ORANGE **69¢**
SAVE 10¢
DRINK
PILLSBURY **69¢**
SAVE 10¢
CRESCENT DINNER ROLLS **49¢**

APPETIZING DEPT.
LIBERTY COUNTRY STYLE BOLOGNA
99¢ lb.

SCHICKHAUS BRAINSCHWEIGER
Liverwurst **99¢**
Boiled Ham **69¢**

PLYMOUTH ROCK LOAVES
MIX OR MATCH **59¢**

BURLY CLASSIC ASSORTMENT
14 1/2 OZ. BOX **99¢**

Two Guys VALUABLE COUPON
Toward the purchase of MAXWELL HOUSE COFFEE 1 LB. CAN **40¢**

Two Guys VALUABLE COUPON
Toward the purchase of GENERAL MILLS NATURE VALLEY GRANOLA CINNAMON 16 OZ. BOX **20¢**

Two Guys VALUABLE COUPON
Toward the purchase of SNOWY BLEACH 26 OZ. BOX **15¢**

Two Guys VALUABLE COUPON
Toward the purchase of MR. MUSCLE TRIGGER 14-OZ. OVEN CLEANER **20¢**

Two Guys VALUABLE COUPON
Toward the purchase of SUNSHINE CHEEZ-IT 18 OZ. BOX **69¢**

175 Passaic Ave. KEARNY
WEEKDAYS 8:00 A.M. to 10:00 P.M.
SUNDAYS 8:00 A.M. to 5:00 P.M.

We reserve the right to limit quantities. Not responsible for typographical errors. Prices effective thru Sat., Dec. 17, 1977.

Belleville teen gains county crown for the second time in two years



Junior Misses — Essex County Junior Miss of 1978 proudly poses following the annual pageant flanked by pageant runner-ups at Nutley High School last week. Pictured, l-r, are Susan Freytag, fourth runner up of Mountain High, West Orange; Debra Butler, second, of Verona; Ann Brucato, first runnerup of Bloomfield, and Marie Fornicola, third

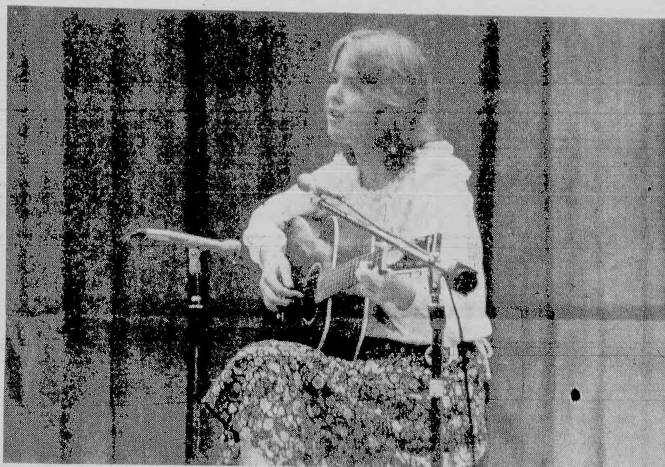
of Mt. St. Dominick Academy. The 17-year-old Belleville pageant winner succeeds her sister, Susan, who not only took the county contest but went on to win the state finals and finish fourth runner-up nationally.



Former Winners — Essex County Junior Misses Susan Santiglia, 1977, and Donna Alexander, 1974, who served as masters of ceremonies for the event, exchange some of their experiences as pageant winners during the Sunday afternoon contest.



Musical Message — Kathleen Cirillo of West Essex Regional High School performs "Concero" by Von Weber in the talent portion of the County Junior Miss Pageant. The competition is a nationwide scholarship program established to recognize, reward and encourage excellence in young people.



Acoustic Artist — Nutley's Theresa Mitchell does a sole rendition of "I'm Easy," from the movie "Nashville." The contest, sponsored by the Nutley Jaycees, judged the 21 finalists from the county on youth fitness, creative and performing arts, poise and appearance, scholastic achievement and personal interviews with judges.



County Champ — Joanne Santiglia holds back tears of joy after being chosen Essex County Junior Miss of 1978. The Belleville High senior, who also won the Sheldon Nagrod Memorial Award for her performance of a gymnastic exercise, will compete in the state finals in Cherry Hill Feb. 4.



Poised Appearance — Marianne Davis of East Orange, winner of the poise and appearance award, visually articulates as she does her interpretation of "Creation" during the talent segment.



Spirited Miss — Susan Valentine performs a tune from the Broadway hit show "Cabaret." The Montclair teen was selected by pageant finalists as the contestant most demonstrative of the Junior Miss Spirit.



Modern Dance — Bloomfield's Ann Brucato, first runner-up and youth fitness award winner, keeps time with the music as she strides through the paces doing a modern ballet.



Airborne — Arlette Rabender of Immaculate Conception High does an acrobatic turn while performing her talent. Each year since 1958, the country's most outstanding senior high school girl is selected from among thousands who take part in the program.

Academically talented gain school transportation rights

Parents of children in the academically talented program are happier this month, now that the Board of Education has agreed to arrange transportation for their children.

The parents gave the School Board an ultimatum at the group's last public meeting in November — either find some way to transport the children to Schools No. 3 and 8 or the program, which was initiated Nov. 1, would be in danger of cancellation.

At the Board's meeting a little more than a week ago, President Caesar Romano announced that a bus was available to take the academically talented to and from school each day, beginning Dec. 6.

"The children have learned through the program," Frank Boyd, 105 Newark Ave., told the trustees at the public meeting Nov. 28 in the auditorium of School No. 4 in Silver Lake.

Boyd, however, questioned School Board president Caesar Romano on when the children would be transported by the Board, alleging that Romano had promised parents of academically talented children this service.

Romano had explained that a bus just arrived and that the group of schoolchildren might be able to make use of it when Trustee Richard Maharian noted that no promises were made by the Board to transport

academically talented children this year.

"Nothing was set aside in the budget for that purpose," Maharian said, "and we do not have the money to start such transportation now."

Maharian said that he did not know what Romano had promised to the parents, but that the entire School Board never decided to fund transportation of the approximately 70 children from every elementary

school. "You're inciting to riot, Mr. Maharian," Romano countered, trying to remediate the situation, which had erupted into one of confusion between the trustees and the parents of academically talented children. The parents had been paying a taxi cab service four, five and six dollars per week for transportation to either School No. 3 or No. 8, where special classes are held daily.

TIBER HARDWARE & GIFTS

125 Washington Ave., Belleville

GIFTS THE WHOLE FAMILY CAN USE! SEE OUR:

- METAL CABINETS
- CHINAS &
- BASE & LINENS

(ALL SIZES) We Gift Wrap!

We rent Blue Luster Machines w/liquid

GRAND UNION SUPERMARKETS

PLAY INSTANT DOLLARS DERBY

What a Christmas present! You could... **WIN \$2,000**

11.5-10 '20-100 \$1,000 \$2,000 EVEN

LOOK WHO'S A WINNER

ODDS CHART	
1000	33 34 35 36 37 38 39 40 41 42 43 44 45 46 47 48 49 50 51 52 53 54 55 56 57 58 59 60 61 62 63 64 65 66 67 68 69 70 71 72 73 74 75 76 77 78 79 80 81 82 83 84 85 86 87 88 89 90 91 92 93 94 95 96 97 98 99 100
1000	100 101 102 103 104 105 106 107 108 109 110 111 112 113 114 115 116 117 118 119 120 121 122 123 124 125 126 127 128 129 130 131 132 133 134 135 136 137 138 139 140 141 142 143 144 145 146 147 148 149 150 151 152 153 154 155 156 157 158 159 160 161 162 163 164 165 166 167 168 169 170 171 172 173 174 175 176 177 178 179 180 181 182 183 184 185 186 187 188 189 190 191 192 193 194 195 196 197 198 199 200
1000	200 201 202 203 204 205 206 207 208 209 210 211 212 213 214 215 216 217 218 219 220 221 222 223 224 225 226 227 228 229 230 231 232 233 234 235 236 237 238 239 240 241 242 243 244 245 246 247 248 249 250 251 252 253 254 255 256 257 258 259 260 261 262 263 264 265 266 267 268 269 270 271 272 273 274 275 276 277 278 279 280 281 282 283 284 285 286 287 288 289 290 291 292 293 294 295 296 297 298 299 300
1000	300 301 302 303 304 305 306 307 308 309 310 311 312 313 314 315 316 317 318 319 320 321 322 323 324 325 326 327 328 329 330 331 332 333 334 335 336 337 338 339 340 341 342 343 344 345 346 347 348 349 350 351 352 353 354 355 356 357 358 359 360 361 362 363 364 365 366 367 368 369 370 371 372 373 374 375 376 377 378 379 380 381 382 383 384 385 386 387 388 389 390 391 392 393 394 395 396 397 398 399 400
1000	400 401 402 403 404 405 406 407 408 409 410 411 412 413 414 415 416 417 418 419 420 421 422 423 424 425 426 427 428 429 430 431 432 433 434 435 436 437 438 439 440 441 442 443 444 445 446 447 448 449 450 451 452 453 454 455 456 457 458 459 460 461 462 463 464 465 466 467 468 469 470 471 472 473 474 475 476 477 478 479 480 481 482 483 484 485 486 487 488 489 490 491 492 493 494 495 496 497 498 499 500
1000	500 501 502 503 504 505 506 507 508 509 510 511 512 513 514 515 516 517 518 519 520 521 522 523 524 525 526 527 528 529 530 531 532 533 534 535 536 537 538 539 540 541 542 543 544 545 546 547 548 549 550 551 552 553 554 555 556 557 558 559 560 561 562 563 564 565 566 567 568 569 570 571 572 573 574 575 576 577 578 579 580 581 582 583 584 585 586 587 588 589 590 591 592 593 594 595 596 597 598 599 600
1000	600 601 602 603 604 605 606 607 608 609 610 611 612 613 614 615 616 617 618 619 620 621 622 623 624 625 626 627 628 629 630 631 632 633 634 635 636 637 638 639 640 641 642 643 644 645 646 647 648 649 650 651 652 653 654 655 656 657 658 659 660 661 662 663 664 665 666 667 668 669 670 671 672 673 674 675 676 677 678 679 680 681 682 683 684 685 686 687 688 689 690 691 692 693 694 695 696 697 698 699 700
1000	700 701 702 703 704 705 706 707 708 709 710 711 712 713 714 715 716 717 718 719 720 721 722 723 724 725 726 727 728 729 730 731 732 733 734 735 736 737 738 739 740 741 742 743 744 745 746 747 748 749 750 751 752 753 754 755 756 757 758 759 760 761 762 763 764 765 766 767 768 769 770 771 772 773 774 775 776 777 778 779 780 781 782 783 784 785 786 787 788 789 790 791 792 793 794 795 796 797 798 799 800
1000	800 801 802 803 804 805 806 807 808 809 810 811 812 813 814 815 816 817 818 819 820 821 822 823 824 825 826 827 828 829 830 831 832 833 834 835 836 837 838 839 840 841 842 843 844 845 846 847 848 849 850 851 852 853 854 855 856 857 858 859 860 861 862 863 864 865 866 867 868 869 870 871 872 873 874 875 876 877 878 879 880 881 882 883 884 885 886 887 888 889 890 891 892 893 894 895 896 897 898 899 900
1000	900 901 902 903 904 905 906 907 908 909 910 911 912 913 914 915 916 917 918 919 920 921 922 923 924 925 926 927 928 929 930 931 932 933 934 935 936 937 938 939 940 941 942 943 944 945 946 947 948 949 950 951 952 953 954 955 956 957 958 959 960 961 962 963 964 965 966 967 968 969 970 971 972 973 974 975 976 977 978 979 980 981 982 983 984 985 986 987 988 989 990 991 992 993 994 995 996 997 998 999 1000

NO PURCHASE NECESSARY

USDA CHOICE

ALL BEEF STEAK & ROAST SALE

SIRLOIN STEAK		RIB ROAST		GROUND CHUCK		CHUCK STEAK	
U.S.D.A. CHOICE BEEF LOIN	1.49	U.S.D.A. CHOICE BEEF	1.59	FRESHLY GROUND BEEF	89¢	U.S.D.A. CHOICE BEEF	59¢
FULL CUT		MIDDLE CUT OVER READY		IN PKGS. 5 LBS. OR MORE		FIRST CUT	
NO TENDERLOIN REMOVED							

SHELL STEAK		TOP CHUCK STEAK		SHOULDER ROAST		LONDON BROIL	
U.S.D.A. CHOICE BEEF LOIN, WITH TAIL	2.59	U.S.D.A. CHOICE BEEF, BONE IN	1.19	U.S.D.A. CHOICE, BONELESS BEEF	1.29	U.S.D.A. CHOICE, BONELESS BEEF	1.59
WELL TRIMMED		U.S.D.A. CHOICE, BONELESS BEEF		U.S.D.A. CHOICE, BONELESS BEEF		U.S.D.A. CHOICE, BONELESS BEEF	
U.S.D.A. CHOICE BEEF LOIN	1.69	SIRLOIN TIP STEAK	1.79	U.S.D.A. CHOICE, BONELESS BEEF	1.89	CHUCK CUBED STEAK	1.64
T-BONE STEAK		U.S.D.A. CHOICE, BONELESS BEEF		EYE ROUND ROAST		CHUCK BEEF STEW	1.39
U.S.D.A. CHOICE BEEF, BONE IN RIB OR LOIN	2.19	ROUND CUBED STEAK	1.69	U.S.D.A. CHOICE, BONELESS BEEF	1.39	CHUCK BEEF STEW	1.49
CLUB STEAK		U.S.D.A. CHOICE BEEF, MIDDLE CUT		RUMP ROAST		SHOULDER BEEF STEW	1.49
U.S.D.A. CHOICE BEEF, SHORT CUT	1.59	CHUCK STEAK	69¢	U.S.D.A. CHOICE, BONELESS BEEF	1.19	Semi-Boneless Chuck	99¢
RIB STEAK		U.S.D.A. CHOICE, BONELESS BEEF		BONELESS CHUCK			
U.S.D.A. CHOICE, SEMI-BONELESS BEEF	1.19	SANDWICH STEAK	1.99	U.S.D.A. CHOICE, BONELESS BEEF	1.99	ROUND ROASTS	1.29
CHUCK STEAK		U.S.D.A. CHOICE BEEF, CENTER CUT		FRESH BRISKET			
		CHUCK ROAST	69¢	U.S.D.A. CHOICE, BONELESS BEEF			
				TOP ROUND FOR London Broil	1.89		

Holiday Hams

HAM, IMPORTED DANISH OR FLUMORE

CANNED HAM 2 LB. CAN 4.79

FLUMORE, IMPORTED DANISH OR HATINA

CANNED HAM 3 LB. CAN 6.99

HYGRADE - 4 TO 6 LBS. IN C.V.

SEMI-BONELESS HAM 1.79

Family Packs

FRESH GRADE A CHICKEN THIGHS 79¢

U.S.D.A. CHOICE BEEF SHORT RIBS 99¢

SAVING A POUND IN PACKAGES OF 3 POUNDS OR MORE

RIB OR LOIN END AND CENTER CUT

PORK CHOP COMBO 1.29

U.S.D.A. CHOICE, BONELESS BEEF

CHUCK CUBED STEAK 1.59

Frozen Foods

GRAND UNION - MIXED VEGETABLES

PEAS, CORN OF PEAS & CARROTS 3.00 PKGS. 1.00

It's A Grand Union of Holiday Grocery Values

CRANBERRY JUICE COCKTAIL 69¢

EARLY GARDEN - SWEET DEL MONTE PEAS 3.89

LIBBY'S IN JUICE FRUIT COCKTAIL 39¢

HUNT'S TOMATO SAUCE 6.00 CANS 1.00

Also at ROSSMORE PHARMACY:

ROMAN BRIO GIFT SETS

COLOGNE & AFTER SHAVE

Prices discounted... Come in and browse!

HIKARATE GIFT SETS

COLOGNE & AFTER SHAVE

Prices discounted... Come in and Compare!

ROSSMORE PHARMACY

Fruits & Vegetables

FLORIDA - WHITE GRAPEFRUIT 5.79

GARDEN FRESH SPINACH 59¢

FLORIDA TANGELOS 10 89¢

TASTY GOLDEN YAMS 29¢

CHICORY AND ESCAROLE 3.95 1.00

IMPORTED SIZE - AA CHESTNUTS 79¢

CRISP RED RADISHES 2.95

THREE HOUR FAMILY LOGS 99¢

SWEET LUSCIOUS ANJOU PEARS 39¢

Dairy Foods

GREAT FOR DIPS - WITH ONION

AXELROD SOUR CREAM 1 LB. CONT. 79¢

SEAL TEST - LIGHT N' LIVELY

COTTAGE CHEESE 69¢

REAL WHIPPED CREAM

REDDI-WIP 1.29

Home, Health & Family Needs

FOR THE TIMES OF YOUR LIFE

KODAK FILM & PROCESSING 2.99

BY AN INDEPENDENT LAB USING KODAK CHEMICALS & PAPERS

ULTRA-BAN 99¢

MINI PADS 1.29

20¢ OFF WITH THIS COUPON AND PURCHASE OF ONE 14.0Z. CAN. OF SNOWY BLEACH COUPON GOOD DEC. 11 THRU DEC. 17 LIMIT ONE COUPON PER CUSTOMER	20¢ OFF WITH THIS COUPON AND PURCHASE OF ONE 14.0Z. CAN. OF SOFT SCRUB CLEANER COUPON GOOD DEC. 11 THRU DEC. 17 LIMIT ONE COUPON PER CUSTOMER	20¢ OFF WITH THIS COUPON AND PURCHASE OF ONE 14.0Z. PUMP CONTAINER MR. MUSCLE OVEN CLEANER COUPON GOOD DEC. 11 THRU DEC. 17 LIMIT ONE COUPON PER CUSTOMER	20¢ OFF WITH THIS COUPON AND PURCHASE OF ONE 14.0Z. CAN. OF LISTERINE MOUTHWASH COUPON GOOD DEC. 11 THRU DEC. 17 LIMIT ONE COUPON PER CUSTOMER	10¢ OFF WITH THIS COUPON AND PURCHASE OF ONE 2.0Z. TUBE - WITH FLUORIDE COLGATE DENTAL CREAM COUPON GOOD DEC. 11 THRU DEC. 17 LIMIT ONE COUPON PER CUSTOMER
---	---	---	--	---

Prices effective Sunday, Dec. 11 thru Saturday, Dec. 17 at all Grand Union stores. In order to assure a sufficient quantity of sale items for all our customers we reserve the right to limit sales to 3 packages of any item unless otherwise noted. Not responsible for typographical errors.



Spelling Champ — Belleville High School freshman Michelle Jeannotte proudly displays her trophy awarded her for winning the recent Knight's of Columbus Spelling Bee. The BHS student took the champion word championship by correctly spelling cohesion.

Craig Fund seeks spirit of holiday

The Belleville Craig Fund Inc. is once again sponsoring its annual holiday drive to help defray medical costs of four local handicapped residents.

Washington Ave., Belleville, 07109. "The money donated goes to help pay for both rehabilitation and therapeutic facilities," a Craig Fund spokesman stated. "We wish to thank all those who have supported the fund in the past and hope they will continue to do so in keeping with the spirit of Christmas."

Contributions may be sent to Craig Fund Inc., care of Edward Albertson, Peoples Bank.

MANCUSO'S CATERERS

464 VALLEY ROAD, UPPER MONTCLAIR

783-9232


OFF PREMISES CATERING FOR ALL OCCASIONS.
COMPLETE HOT & COLD BUFFETS.

Call for Free Brochure

"Let the King of Catering make your Party a Royal Affair"

- Continental dishes
 - Delicious desserts
 - Hot & Cold Hors d'Oeuvres
- DELIVERY & PICK-UP OF ALL EQUIPMENT**

SEIBEL'S



GREAT FASHIONS!

GREAT VALUES!

GREAT EXTRAS!

That's what Seibels has meant to three generations of New Jersey women. And, the tradition continues today... women who are only interested in the finest brand names, courteous, friendly and helpful service plus those Seibels EXTRAS!

- FREE ALTERATIONS
- FREE PARKING (in Newark)
- FREE 90 DAY CREDIT ACCOUNTS
- BANK AMERICARD
- MASTER CHARGE
- AMERICAN EXPRESS

NEWARK—68 BROADWAY
482-0111
NUTLEY—227 FRANKLIN AVE.
235-1900



LOOK FOR DETAILS ABOUT THE
CHIEF'S 1st SOAP BOX CLASSIC
352 Wash. Ave. Belleville 759-0333

the incredible **FASHION MARKET**



SAVE 20% to 80%

SWEATERS
Orig. \$20 **\$10.40**

WOOL PANTS
Orig. \$45 **\$20.00**

VESTED SUITS
Orig. \$95 **\$40.60**

TENNIS DRESS
Orig. \$18 **\$4.50**

Genuine Suede Front
SWEATERS
Orig. \$37 **\$17.60**

discounted prices
No one can offer Better quality or a Better Selection at a Better Price Than Us

the incredible **FASHION MARKET**

33 RT. 17S, E. RUTHERFORD
TAKE RT. 3 EAST TO RT. 17 NORTH
JUST MINUTES TO FASHION MARKET
MON.-FRI., 9-9, SAT., 9-8, SUN., 11-5
935-6150

Garden State Farms DAIRY STORES



For This Holiday Season

NEAPOLITAN ICE CREAM Reg. 2.19 HALF GAL.

\$1.75

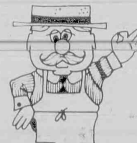
Karen Sandfort Assorted CHOCOLATES Reg. 3.70 Large Box

\$2.95

Creamery Fresh (Please, 2 per customer) BUTTER Reg. 1.31 ROLL POUND

\$1.09

Don't Forget Our
Real **EGG NOG** and
Fresh **HEAVY CREAM**
To Top Off Your Holidays



**SPECIALS ON SALE
DEC. 15-18**

Pleasing You Pleases Us

**Garden State Farms
DAIRY STORES**

Substitute teachers get \$1 hike

Belleville's substitute teachers earn one of the lowest salaries per day compared to substitute teachers throughout Essex County and in the local vicinity, even when considering the one dollar raise just approved by the local School Board.

The board voted 5-1-1 to raise the per-diem rate of pay for substitute teachers from \$21 to \$22 per day, effective Jan. 1, 1978, making local substitutes the second-lowest paid group in the area.

All board members except President Caesar Romano and Trustee Richard Mahmarian approved the resolution. Romano vetoed it and Mahmarian took no part in the voting.

Of 11 towns sampled, only Nutley offers its substitutes a lower per-diem rate than Belleville's resolution proposes, with subs there earning \$21, or the equal of Belleville's present fee.

"We've had trouble getting substitutes and it's getting even more difficult," Dr. John Greed, superintendent of schools, said. "We're trying to gradually keep up with the other districts."

Greed noted that this increase helps keep Belleville closer to the other districts and that it would be bad to get too far behind on the pay scale.

Bloomfield is on a par with the new salary that Belleville will soon offer, with districts like Kearny, Rutherford, Montclair, West Orange and North Arlington offering \$24 and \$25.

The pay scale is higher in nearby Lyndhurst, at \$27.50; in Passaic, at \$29; and in East Orange, at \$30. Newark's School Board pays its substitute teachers more than all the other towns sampled and double Belleville's current fee — \$42.37 per day. — Mary Freeman.

GOP Party alive: Renna

A surprising victory for Governor Byrne and a time to reflect and evaluate the make-up and goals of the Republican party. These were the sentiments of John Renna, chairman of the Essex County GOP, following the Democratic victory in New Jersey.

Renna pointed out that many lessons were learned in the campaign, not the least important of which was the necessity to keep the Republican Party in Essex County unified and moving as it has over the past six months.

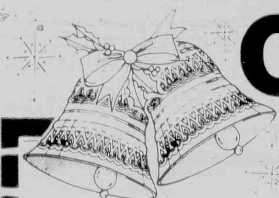
"There are many reasons for victory or defeat," Renna said, "and one or two events rarely determine the outcome. Our people in Essex worked hard, and for this they deserve credit and praise. But many problems cropped up during the campaign over which we had little or no control, and these contributed to defeat."

"I would like to state categorically, however, that the Republican Party in New Jersey is not dead, nor do we have any intention of rolling over. We will continue to be the loyal opposition, and I serve notice that the elephant will be heard from, our candidates will be elected and the one-party rule in New Jersey will be terminated. These goals are attainable in the near future."

Renna stated he intends to bring county leaders together for evaluation and to decide upon new approaches for the future. He emphasized that the process of change must begin on all levels and has to include every leadership echelon.

Ahead as the first goal of the Republican Party, is selection of the strongest and most attractive candidates for county executive and freeholders under the charter change. The qualifications for the former, he pointed out, include a broad understanding of government, business and politics; freeholder aspirants must possess these attributes plus a strong position in their respective districts.

"We will be meeting with the charter change group as well as with members of our own party, Democrats and Independents to find the right candidates and to make sure that the new county districts will be acceptable to all parties," he stated, "we feel that our interests coincide with those of the charter faction and other independent thinking citizens, and our total commitment to this cause will be forthcoming."



CVS/ Health & Beauty Aids at Discount Prices

Consumer Value Stores

SALE TODAY
THRU SATURDAY,
DECEMBER 17th
QUANTITY RIGHTS RESERVED

CHRISTMAS CHECKLIST

DESTOCKING STUFFERS
OPPERUME & COLOGNES
COSMETICS

ONOVETIES
BCANDY
OTOBACCO

OPARTY SUPPLIES
OGREETING CARDS
OFILM

OFILM
OFILM
OFILM



WHITMAN'S SAMPLER
Ass't Chocolates
3.5 oz. pound
Our Regular 3.75

2.88



SMITTY COLOGNE
SPRAY

1 ounce

2.49
Our Regular 3.75



NORELCO COMPLEXION PLUS

Cordless face scrubber
with 1 ounce bar of
cleansing soap

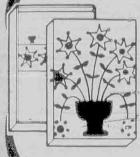
9.88
Our Regular 14.88



OLD SPICE
SOAP ON
A ROPE

5.75 ounce

1.59
Our Regular 2.19



MONTAG STATIONERY

24 sheets, 16 envelopes

Assorted

99¢
Our Regular 1.39



CRICKET
KEEPER

Butane Lighter & Cigarette Pouch

Our Regular 2.99

WILD CRICKET
Accent Table Lighter
Model no. 3564
Our Regular 2.49

YOUR CHOICE
1.99

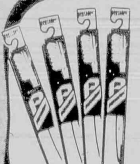


LIFESAVERS
STORY BOOK

7 ounce

10 voices

88¢
Our Regular 99



PEPSODENT
ADULT
TOOTHBRUSH

Medium or Hard Bristles

4 FOR

99¢
Our Regular 67



CVS TRASH CAN LINERS

26 gallon capacity

20 count

Our Regular 1.79

1.09



RAY-O-VAC BATTERIES

4-pack

D cell

Our Regular 1.29

69¢



IVORY
LIQUID

22 ounce

Our Regular 1.03

69¢



CVS COLOR PRINT FILM

126-12

Fits All Instant

Loading Cameras

110-12

Fits all

Pocket Cameras

COMPARE TO

Kodak Film 126-12 & 110-12 at 1.24

79¢
YOUR CHOICE



DELUXE
CHRISTMAS
GARLAND

4' wide X 20' long

2 ply

79¢
Our Regular 1.29



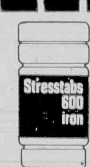
MAALOX
LIQUID
ANTACID

World's First-Choice

Antacid

12 ounce

1.39
Our Regular 1.43



STRESSTABS 600
HIGH POTENCY
STRESS VITAMINS

WITH IRON

60 count

3.99
Our Regular 4.99

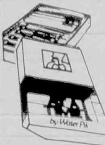


NEUTROGENA
ACNE CLEANSING
SOAP

HYPO-ALLERGENIC

3.5 ounce

99¢
Our Regular 1.31



ONE STEP
AT A TIME
FILTER

4 Filter Smoking

Withdrawal System

7.88
Our Regular 9.88



PEPTO-BISMOL
LIQUID

For Upset Stomach

8 ounce

99¢
Our Regular 1.30



THERAGRA M
HIGH POTENCY
VITAMINS

WITH MINERALS

100 count

With 30 FREE

4.66
Our Regular 5.49



SCHOLL
SOFTENING
LOTION

WITH COCOA BUTTER

8 ounce

99¢
Our Regular 1.34



OLD SPICE
LOTION
TRAVELER

4.75 ounce

1.59
Our Regular 2.17



CHLORASEPTIC
MOUTHWASH
& GARGLE

Regular or Cherry

6 ounce

1.19
Our Regular 1.59



ROBITUSSIN DM
6-8 HOUR
COUGH FORMULA

4 ounce

1.09
Our Regular 1.76



SCHOLL
HOSETTES
FOOT SOCKS

one pair

one size fits all

66¢
Our Regular 86



BUF
BODY SCRUB
BRUSH

Model no. 916

2.88
Our Regular 3.99



LILT
PUSH BUTTON
STYLE KIT

Our Regular 2.97

1.99



TAMPAX
SUPER PLUS
TAMPONS

10 count

39¢
Our Regular 60



PLANTERS
MIXED NUTS

Less than 50% peanuts

12 ounce

1.49
Our Regular 1.99

Check Our Large Selection of Famous
Name Cosmetics for Holiday Gift Ideas...

•CHARLIE •PRINCE MATCHABELLI •ME •FIDJI
•JEAN NATE •AVANCE •CACHET •EMERAUDE

CVS
Consumer Value Stores

16 MAIN AVE.,
CLIFTON
412 MAIN ST.,
BELLEVILLE

times/news Sports

Montclair wrecks Blue-Gold opener

BY MIKE COREY

The Mounties of Montclair invaded the Belleville High hardwood's Friday night and spoiled the Blue-Gold's season premier, outdistancing the home squad 67-47.

The Bellboy cagers were slated to jump off with the Eagles of Essex Catholic Tuesday afternoon in Newark but the final score of the contest was in too late to make this week's edition of the Times/News.

Belleville continues wearing its traveling sneakers facing Columbia tomorrow night in Cougar territory at eight before retuning home to tip off with Orange Tuesday and Irvington Wednesday. Both games are scheduled to get underway at 3:45 p.m.

"Overall I had mixed emotions with the game," stated Bellboy roundball coach Dan Grasso commenting on Friday's season debut against Montclair. "I'm very pleased with the way the kids boxed out and held Montclair to one shot but when we fell behind in the third period we just weren't patient enough and hurried our shots."

"Sometimes when you're playing catch up basketball you have a tendency

to try to get back in the ballgame all at one time," added the coach.

Montclair, utilizing a switching defense which alternated between a man-to-man and a zone, jumped off to an early seven point lead and held a 15-8 advantage at the end of the initial quarter.

"We had a couple of turnovers, walks and stalls along with a few bad passes which is why we got behind in the first quarter," stated the Bellboy mentor.

The Blue-Gold changed from its man-

to-man coverage to a zone in the second period and were able to contain the Mountie big men, limiting the visitors to one shot. The switch enabled the Bellboys to scratch their way back into the ballgame.

"The kids really put out, worked hard and were aggressive," pointed-out Coach Grasso. "I thought we played an excellent first half of basketball."

Belleville came within six points of the

Continued on page 14.

Bellgirls drop roundball debut

Despite a torrid first quarter of shooting which saw the Bellgirls connect on 70 percent of its shots, the Mounties cooled off the Blue-Gold cagers in the second half to ice the opening season contest, 54-47, Friday in Montclair.

The Belleville squad was seeded to initiate the home court year against

Livingston Tuesday at 3:45 p.m. but results of the basketball confrontation were in too late to make this edition.

The BHS female roundball club is slated to tip-off with Columbia at the Blue-Gold gym tomorrow in a 3:45 matinee, before traveling to Orange Tuesday afternoon to square off with the Tornadettes.

"We played a pretty good game except we ended up on the wrong end of the score," stated Bellgirl cager chieftain Karen Fucello, reflecting on Friday's game which tickled the initial twine of the 1977-78 girls basketball season.

The local hardwood club began the contest with red hot shooting hitting 70 percent from the field but Montclair was able to keep pace with accurate foul shooting to deadlock the game at 14-14 at the end of the opening period.

The Blue-Gold's hot touch inevitably cooled in the second quarter, to 46 percent, but the Bellgirls still held a 28-27 advantage as the horn sounded signaling the end of the first pair of periods.

"The first half we shot 57 percent from the floor," said Coach Fucello. "We haven't done that in I don't know how many years."

The Mounties began the court battle in a man-to-man defense but switched into a zone the next quarter attempting to stymie the Belleville "dead-eye" shooting barrage.

The Bellgirls came out in a man-to-man set up right from the start and stuck with it throughout the entire game.

"We wanted to play in a man-to-man last year but we didn't feel we were strong enough," pointed-out the Belleville coach. "But this season we think we can effectively use it to put more pressure on opponents."

The Blue-Gold court chief singled out the play of Michele Giordano, in the middle, for holding Mountie hub,

Continued on page 15.

Matmen begin season at Becton Saturday

Belleville's grapplers assume the wrestling-position Saturday at 1 p.m. against Becton High to begin accumulating riding time on the 1977-78 mat season.

The Bellboys square off with the Raiders in Nutley Wednesday at 3:45 p.m. before initiating the home year on the BHS mats Friday, Dec. 23, versus Irvington at 6:30 p.m.

"Becton usually comes up with a respectable club and we feel we have to wrestle according to our ability in order to come out on top," stated Blue-Gold wrestling mentor Gene D'Alessandro. "They generally have a very physical type of team, very strong. The kind of athlete that if you make a mistake against him it could be very costly."

The Belleville coach has pretty well established his starting wrestling lineup for Saturday's opening match.

In the 101-pound division senior Rob Gobencione, a transfer student from Glen Ridge, should be initiating the first mat battle for the Blue-Gold versus Becton.

Junior classman Frank DeLorenzo, returning county and district champ from last year, is slated to wrestle in the 108-pound class for the Blue-Gold.

Ed Lijo, a BHS senior, also up a weight class from last year, will be competing in the 115-pound category while junior Ken Niele who came off a "very respectable jayvee season," will be hitting the mats to the tune of 122-pounds for the Bellboys.

In the 129-pound division Mike Stel-

latella, a junior transferee from Essex Catholic, will get a starting assignment Saturday replacing the injured senior Mark D'Amico, a veteran of last season's Belleville matters.

"A returning district champ, Mark will be back in action in a couple weeks," stated the Blue-Gold mat coach. "He suffered an injury to the rib cage and we're expecting to have Mark back in action in a couple weeks," stated the Blue-Gold mat coach.

Another returning vet from last season's successful grappling squad is Mark DiGiacomo, a senior who will be competing in the 136-pound weight class.

The 141-pound entry for the Bellboys has not been finalized but according to Coach D'Alessandro the field has been narrowed down to juniors Jim D'Angelis and Rudy Sabano. "The decision will be made the tail end of the week," said the Belleville wrestling helmsman.

A varsity letterman for the past two years, senior Bob Racioppi will be wrestling for BHS in the 148-pound class while sophomore Chris Mussamano is slated to start in the pads for the home squad in the 158-pound category.

"It's very unusual for a sophomore to break into the lineup especially in that weight class," pointed out Coach D'Alessandro. "But he's been looking good in scrimmages and practice sessions."

Junior Angelo Santinelli will take to the mats for the Blue-Gold in the 170-pound division while the 188-pound weight class is still up for grabs

Continued on page 16.

Grid captain named athlete of the week

By BARBARA HAGIN

One of the four captains of the Blue-Gold varsity gridiron squad was recently named athlete of the week by Belleville High School.

Linebacker Sam Fusaro was selected as the third BHS athlete to be honored since the initiation of the program in the fall.

The senior Bellboy believes greatly in team spirit and pride. He points out that one of the highlights of his high school football career was the 1977 Nutley game when he took the field with a Mohawk Indian haircut.

"I really did it for the team," recalls the Blue-Gold footballer. "It was something which really psyched everyone up."

Sam began playing organized football when he was in junior high school, for the Biancardi hash mark team. He gradually worked his way up to the varsity level by

competing on both the BHS freshman and jayvee pigskin squads.

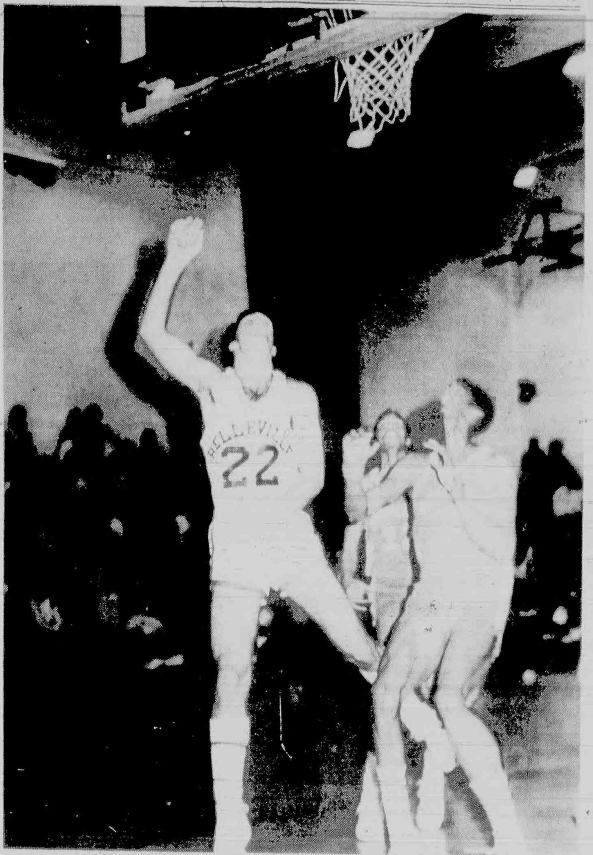
He was named team captain of the '77 Bellboy gridriders by a vote of the players at the start of the year.

After football season, the Blue-Gold athlete is a member of the Belleville varsity crew club.

Between seasons, Sam weightlifts, plays intramural basketball and enjoys listening to the Beach Boys and "hanging with friends."

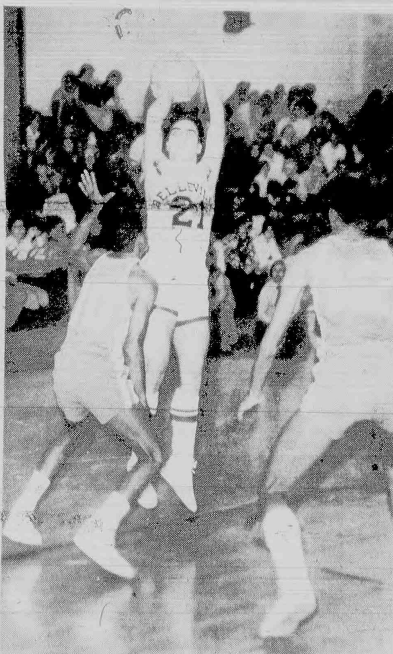
Sam's future plans include continuing his education and possibly entering the field of printing. "I still would like to go on playing football no matter what," states the Blue-Gold captain, "and I hope this will be possible in the future."

Leaving BHS this June is one thing Sam admits he will regret. "I'll leave behind a lot of good times," he exclaims. "I'm never going to forget my friends, the football and crew teams and my coaches."



High Flyer

Blue-Gold senior courtman Tom Smith, 22, banks a layup off the boards during the first period of the Bellboys initial roundball game of the year Friday night against Montclair.



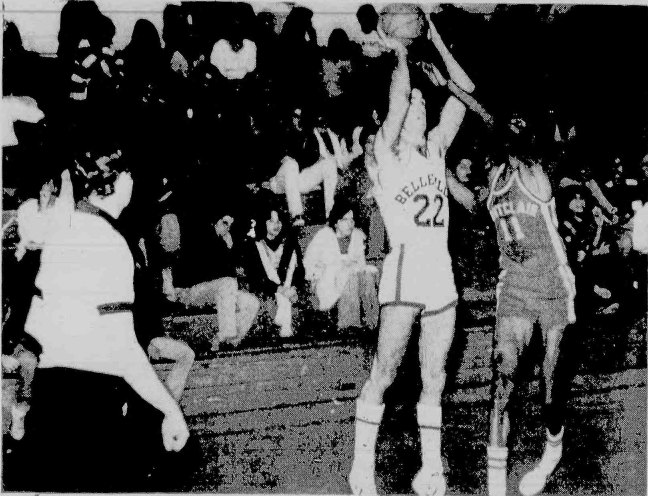
Jump Shooter

Bellboy Dean Campana, 21, pumps in a short jump shot in the third quarter of the Mountie contest at BHS gym, Belleville dropped the opening court confrontation, 67-47, kicking off the high school basketball season.

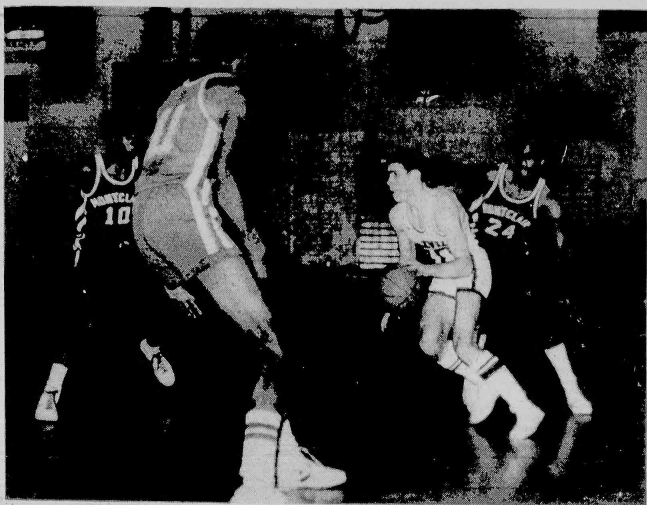
Corner Cager

Belleville's hardboarders fell behind early in the contest and were never able to make up the deficit against the taller, physical Montclair five. The Bellboys are slated to take on the Cougars in Columbia tomorrow afternoon.

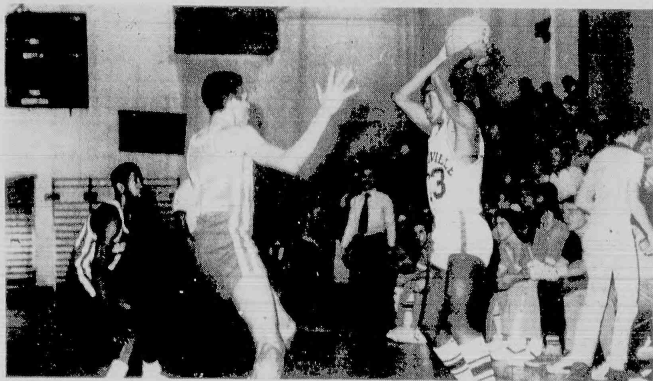




Baseline Pumper — Tom Smith pulls up for a short jumper just beyond the outstretched hand of a visiting defender. The Bellboys trailed by just six points at the half but were outscored 18-8 in the third quarter effectively putting the game out of the Blue-Gold's reach.



Night Moves — Belleville co-captain Paul Donahue dribbles between two Mounties toward the hoop in the first period of the first game of the season for the Bellboys.



Squeeze Play — Belleville's Keith Isler looks for the open man at the BHS gym Friday night against a pair of Mountie defenders in the second period of the roundball confrontation.

Montclair YMCA offers Jan. swim class for tots

The Montclair YMCA is offering a program of gym and swimming activities for very young children Jan. 9 through March 18. Parents must register children this month.

Those interested can stop at the YMCA's 23 Park St. building daily 8:30 a.m. to 6 p.m.

Classes will include "Bubble Babies," an exercise program for children three to 12 months and their parents, meeting Wednesday mornings or Thursday afternoons.

"Tipy Tots," a pool program introducing basic swimming skills to children 1 and 2 and their parents, meeting Monday evenings, Tuesday

mornings or Wednesday afternoons. "Me and My Shadow," gym and pool time for children 2 and 3 and their parents, meeting Tuesday evenings, Wednesday mornings or afternoons or Friday mornings.

In addition, gymnastics classes will be held for first and second-grade boys and girls Monday or Wednesday afternoons, and a gym-swim class for first and second-

graders will meet Thursday afternoons. For more information, call 744-3400.

Cougars host Bellboys tomorrow night at eight

Continued from page 13.

Mountie lead, outscoring Montclair 15-14 in the second period and went into the lockerroom down 29-23 at the half.

Led by Montclair's Kevin Lewis, who scored five of the first seven points in the third quarter, the Mounties opened the point spread so wide the Blue-Gold cagers could never recover.

the home team's scoring attack while Mounties Kevin Lewis, 15, and Craig Robinson, 14, led the visitors offense.

"I really can't single out any one player as being outstanding," said Coach Grasso. "The things we did well we did well as a team."

The visitors outscored the home club 18-8 in the crucial third quarter which proved to be the turning point of the entire court confrontation.

Belleville attempted to stem the onrushing scoring tide with a full court press late in the period but the Mounties, untrammelled by the backline pressure, overcame it with effective passing and connected on several layups forcing Coach Grasso to halt the strategy.

"We wanted to press them flat in the period to see how they would handle the pressure," explained the Bellboy director. "After they got a couple breakaways we called it off." Bellboys Tom Smith with 21 points and Paul Donahue, 12, paced

Opening Game Individual Stats				
	FG	FT	T	
Belleville	3	0	6	
Campana	3	7	21	
Smith	7	0	4	
Veniero	2	0	0	
Isler	1	0	2	
Roll	0	0	0	
Jackson	1	0	2	
Totals	19	9	47	
Montclair				
Silviera	0	0	0	
Hurt	0	0	0	
Robinson	7	0	14	
Brown	1	2	4	
Banks	0	2	2	
Gardee	1	0	2	
Wynn	4	0	8	
Taylor	3	4	10	
Lewis	6	3	15	
Jackson	2	1	5	
Dunn	2	0	4	
Totals	26	15	67	

You'll find what you need at **DEPENDABLE VARI JEWELERS**
12 Ridge Rd. No. Arlington
998-0707

SUIT CLUB WINNERS
MON: C. Peduto
NUTLEY
FRI: C. Walther
TOWNA
FRANKLIN MEN'S SHOP
667-0189

BILLY REITMAN IS THE NEWEST YOUNGEST BEST AMC DEALER!
GREMLIN, PACER, MATADOR, JEEP
Introducing the all new luxury compact
'78 CONCORD
FINE USED CAR SELECTION
Park 470 Broad St. Bloomfield
AMC JEEP 740-0600

St. Peter's wins 4th game in row

St. Peter's parochial school captured its fourth consecutive victory to maintain its lead in the Grammar School Basketball League, by outpointing St. Mary's of Nutley 50-40, last week.

The roundball contest pitted seventh and eighth grade players against each other.

St. Peter's Individual Stats				
Name	FG	FT	TP	
Chris Paoello	5	2-2	12	
Jack Mallack	5	0-0	10	
Bob Grogan	3	1-4	7	
Julio Roig	3	0-2	6	
Phil Cerza	2	0-0	4	
Dave Delorenzi	2	0-1	4	
Ron Bari	2	0-0	4	
Pete Arancio	1	0-0	2	
Mike D'Amico	0	1-2	1	
Rocco Balsomo	0	0-0	0	
Totals	23	4-11	50	
St. Mary's				
Name	FG	FT	TP	
T. Spasato	6	0-8	12	
T. Cafone	4	1-2	9	
T. Scary	4	0-0	8	
B. Maher	0	7-16	7	
S. Schuster	1	0-0	2	
M. Conca	1	0-0	2	
Totals	16	8-26	40	

LOOK FOR DETAILS ABOUT THE **CHIEF'S 1st SOAP BOX CLASSIC**
352 Wash. Ave. Belleville 759-0333

TV'S and STEREO'S
In THE MOST BEAUTIFUL CABINETS IN THE WORLD BY... **MAGNAVOX**

"CHOOSE FROM"

- Early American
- Campaign
- Italian Provincial
- French Provincial
- Spice Chest
- Venetian
- Queen Anne
- Dry Sink
- Mediterranean
- Contemporary
- Armoire
- Aegean

BECK'S
196 Franklin Ave.
Nutley 667-4225
"We Service What We Sell"
35 Years of Responsible Retailing

The Great Tape Escape

AUDIO EQUIPMENT — RECORDS & TAPES

12" Black & White TV
NOW \$67⁹⁹ Reg. \$119⁹⁵

Pioneer 8005 Super Tuner AM/FM Cassette Player
NOW \$154⁹⁵

RCA XL 100 Color TV
NOW \$319⁹⁵ Reg. \$489⁹⁹

Atari Cartridge TV Games 27 GAMES
NOW \$159⁹⁵ Reg. \$209⁹⁵

Jensen 6 x 9 Coaxiales
NOW \$37⁹⁵ Reg. \$69⁹⁹

Micro Cassette Recorder 1 1/2" x 5 1/2"
NOW \$35⁹⁵ Reg. \$69⁹⁵

ALBUM SPECIALS

- Brass Construction III \$2⁹⁹
- Barbra Streisand — Superman \$2⁹⁹
- David Soul's Newest \$2⁹⁹
- "Playing to an Audience of One" \$3⁹⁹
- Elvis — Christmas \$3⁹⁹
- Bing Crosby \$3⁹⁹

8 TRACK TAPES

- Kiss Alive II \$5⁹⁹
- Elvis — Pure Gold \$4⁹⁹

We have the largest selection of tapes in the area! Featuring such artists as the Big Band Singers, the Big Bands, Country Western, Jazz and many, many more. Also a fine selection of \$1.99 LP'S and \$2.50 TAPES!

MARANTZ • PIONEER • CRAIGE KENWOOD • ZENITH • DUAL MAXELL • BMI • DYNACO • ETC.
OFFER EXPIRES DEC. 19, 1977

171 FRANKLIN AVE. NUTLEY
235-0737 • 10 A.M.-9 P.M.

Sony Betamax SL 8200 with timer
NOW \$869⁹⁵ Reg. \$1195⁹⁵

Teac A-100 Cassette Deck with Dolby
NOW \$159⁹⁵ Reg. \$229⁹⁵

Panasonic AM/FM Digital/Clock Radio RC-6030
NOW \$27⁹⁵

Technics SL-20 Turntable
NOW \$74⁹⁵ Reg. \$109⁹⁵

Sansui Receiver 5050
30 Watts per Channel
NOW \$199⁹⁵ Reg. \$325⁹⁵

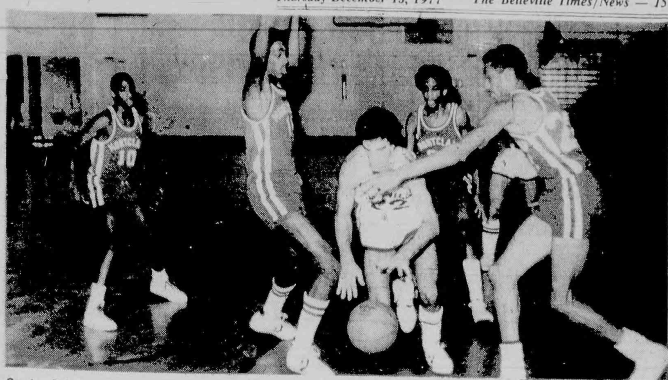
G.T.E. COUPON \$1⁰⁰ OFF ANY LP OR TAPE NOT ON SALE

ALL TAPES GUARANTEED 1 FULL YEAR





Tip-Off — The Bellboys initiated a full court press near the end of the crucial third period Friday to try and stymie the Montclair offense. The Mounties, however, beat the strategy with crisp passing, forcing Bellboy coach to call off the backline move.



Center Drive — Tom Smith, high scorer for Belleville Friday night with 22-points, heads for the basket and two points on the BHS hardwoods.

**Belleville High Girls Varsity
1977-78 Basketball Schedule**

Date	Opponent	Location
Dec. 9	Montclair	Away 3:45 p.m.
Dec. 13	Livingston	Home 3:45 p.m.
Dec. 16	Columbia	Home 3:45 p.m.
Dec. 20	Orange	Away 3:45 p.m.
Dec. 22	Irvington	Away 3:45 p.m.
Dec. 27, 28, 30	Christmas Tourney	Away
Jan. 3	East Orange	Home 3:45 p.m.
Jan. 6	Kearny	Home 3:45 p.m.
Jan. 10	Bloomfield	Away 3:45 p.m.
Jan. 17	Nutley	Away 3:45 p.m.
Jan. 20	Orange	Home 3:45 p.m.
Jan. 24	Montclair	Home 3:45 p.m.
Jan. 27	East Orange	Away 3:45 p.m.
Jan. 31	Columbia	Away 3:45 p.m.
Feb. 3	Bloomfield	Home 3:45 p.m.
Feb. 7	Irvington	Home 3:45 p.m.
Feb. 10	Nutley	Home 3:45 p.m.
Feb. 14	Kearny	Away 6:30 p.m. J.V.
Feb. 20	Cedar Grove	Home 11:00 a.m.
Feb. 21	East Orange Catholic	Home 3:45 p.m.
Feb. 24	St. Aloysius	Home 3:45 p.m.

Female cagers tip-off home season tomorrow

Continued from page 13.
six-foot two-inch D.C. White, to just nine points and 12 rebounds on the afternoon.

"Michele denied the center the ball and turned in a gem of a defensive game," said the Bellgirl mentor. "It was exceptional."

Belleville's female cagers suddenly got cold after the halftime interlude. The cooling off process was gradual. It began at the free throw line when the Blue-Gold missed seven shots and slowly spread across the rest of the court. The local court women were outpointed 12-10 in the third period.

"We would have been up by five if we had hit them," stated the Belleville coach. "In the fourth period we kind of dropped dead offensively. They played a zone. We penetrated but failed to convert."

"We also didn't draw too many fouls," added Coach Fuccello. "And we allowed one of their players (Indy Miller) to score 30-points, although sometimes we even had two defensive players on her. It was just our inability to stop an outstanding shooter."

In contrast from the first quarter the Mounties held the Blue-Gold to an 18 percent shooting percentage essentially providing the ingredients for the Montclair win.

"Our guards were not giving us the offense we needed and not opening up the defense," stated the Belleville coach. "Defensively we are pleased but offensively we feel we need more from our third and fourth players. Overall when you are better than your opponent you should win. Team wise we were better."

High scorer in the Bellgirls opening contest was Michele Giordano with 20-points, Karen Portuese with 10 and Pat Connelly with nine.

The 1977-78 version of the Bellgirl cagers includes Michele Giordano at center, Joyce Iacullo at point guard or forward, Patty Connelly at forward and Karen Portuese and Karin Sciacca at wings (guards).

Denise Zarra, Denise Juliano, Tomi Sperduto, Lisa Wells and Robin Giordano round out the Blue-Gold cager squad.

**LOOK FOR DETAILS
ABOUT THE
CHIEF'S 1st
SOAP BOX CLASSIC**

352 Wash. Ave. Belleville 759-0333

Merry Christmas

from Frank and his staff at
FRANK'S DELI
384 Union Ave., Belleville
SPECIALIZING IN:

- Homemade Mozzarella
- Fresh Cheese & Provolone
- Our own assortment of Fresh Salads
- All Italian Products

HOT & COLD CATERING! Call 751-1241

The Boston Store

Spend Christmas With Us
FOR ONE-STOP FAMILY SHOPPING

**• INFANTS
• BOYS & GIRLS
• MEN'S & WOMEN'S
• CUBS-SCOUTS-
• LEADERSHIP**

**SENIOR CITIZEN DISCOUNT
10% OFF on reg. price merchandise**

FREE GIFT WRAP

OPEN EVES, TILL CHRISTMAS
SAT. TILL 5

The Boston Store
538 Washington Ave.
Belleville 759-2451
We Deliver

make it a Merrier Christmas with these

HOLIDAY SEWING SPECIALS

Hey Kids! Santa Claus will be at Fabric Arcades every day from Dec. 17th thru Dec. 24th.
(IN THE FORM OF WHBI FM DISC JOCKEY ALLAN KAY)

HAPPY HOLIDAYS TO ALL FROM THE ENTIRE FABRIC ARCADES STAFF

Low Prices That Pay Dividends For Years To Come.

ONLY \$88⁸⁸

IT'S A NO-RISK INVESTMENT WITH THIS FASHION MATE MACHINE

You'll get all the basics on this zig-zag machine with front drop-in bobbin and extra wide zig-zag capability. Cabinet or carrying case extra. Model 247.
*A Trademark of THE SINGER COMPANY

**OPEN 7 DAYS A WEEK!
MON.-FRI. 9-9, SAT. 9-6, SUN. 10-5
386 FRANKLIN AVE., NUTLEY 284-0333**

Three of the best friends your budget's ever had



***Calling all area merchants:**

Gain added sales and profits during the holiday period with Peoples Bank. Visa and Master Charge. Even if you now offer cards through another source, check the benefits of a hometown relationship and your share of our customers' buying power. Call today. 759-1000.

Peoples Bank now offers both of the leading all-purpose charge cards: Visa (the new name for BankAmericard) and Master Charge. Internationally recognized, one or both of these prestige cards provides virtually unlimited-charge privileges for purchase, dining, travel, accommodations and services of every description. Each card offers "cash advance" features for instant money at any office of Peoples Bank or participating banks across the nation. Get full details and an application at any office, or call 759-1000.

PEOPLES helping people

PEOPLES BANK N.A.
Belleville, N.J. 759-1000

Washington Ave. at Van Houten
Franklin Ave. at Jorammon
Bloomfield Ave. at Belmont

Bellboy grapplers wrestle Maroon Raiders Wednesday

Continued from page 13.

between Bob Neuyer and Joe D'Agostino.

Rounding out the Belleville opening day grappler lineup is anchor man "Wild Bill" Gallagher, a senior, who'll be competing in the heavyweight division.

The Bellboy matters have primed for opening day with preseason scrimmages within the last 10 days against High Point High, Parsippany and Lodi.

"The scrimmages went pretty much the way we expected," admitted

the Blue-Gold mat chieftain. "We were able to correct some of the mistakes you miss during practice but primarily we used them as a warm-up for the season."

"We feel we are prepared for the beginning of the year but far from where we're supposed to be later on," added the coach. "We're very proud of our group of boys. They've worked hard and shown a lot of enthusiasm and we hope that when the challenge arrives they will be prepared to face it."

Belleville High Varsity Wrestling Schedule

Date	Opponent	Location
Dec. 17	Becton	Away 1:00 p.m.
Dec. 21	Nutley	Away 3:45 p.m.
Dec. 23	Irvington	Home 6:30 p.m.
Dec. 27	Bloomfield Tourney	Away
Jan. 3	Middletown	Home 6:30 p.m.
Jan. 6	Montclair	Home 6:30 p.m.
Jan. 11	Westfield	Home 3:45 p.m.
Jan. 13	Columbia	Away 7:00 p.m.
Jan. 20	Seton Hall	Home 6:30 p.m.
Jan. 21	Orange	Home 1:00 p.m.
Jan. 28	Kearny	Away 1:00 p.m.
Feb. 1	Caldwell	Away 6:30 p.m.
Feb. 3	Bloomfield	Away 8:00 p.m.
Feb. 8	Clifton	Home 3:45 p.m.
Feb. 10	Essex Catholic	Home 6:30 p.m.

Belleville High School 1977-78 Freshman Wrestling Schedule

Date	Opponent	Location
Dec. 17	Pequanook Tournament	Away
Dec. 21	Nutley	Home 3:45 p.m.
Dec. 23	Irvington	Home 6:30 p.m.
Jan. 3	Middletown	Home 6:30 p.m.
Jan. 10	Bloomfield South	Away 4:00 p.m.
Jan. 13	Columbia	Away 7:00 p.m.
Jan. 21	Secaucus	Away 12 noon
Jan. 28	Kearny	Away 1:00 p.m.
Feb. 1	Caldwell	Away 6:30 p.m.
Feb. 3	Clifton	Away 3:45 p.m.
Feb. 10	Essex Catholic	Home 6:30 p.m.

CYO ski weekend set for January

The Essex County CYO is sponsoring a ski weekend for high school students in the Berkshire Mountains, Pittsfield, Mass., Friday, Jan. 6, through Sunday, Jan. 8.

The \$70 weekend includes round-trip bus transportation, two nights' accommodations at the Berkshire Hilton Inn, Saturday dinner, a hoagie feast Sunday, poolside splash party and discotheque dancing each evening.

Also included in the recreational

package are ski instructions by the mountain's staff, free daily transfers from the hotel to the ski area, free ski equipment, equipment breakage and damage insurance and inner tube races at the Bousquet Ski Area.

Optional activities include roller skating, ice skating, movies, bowling, horseback riding and indoor tennis.

Those interested should mail \$20 deposits immediately as reservations are being taken on a first-come, first-served basis. Final payments are due Dec. 23.

For more information, contact the CYO Office, 425 Bloomfield Ave., Montclair, or call 746-6867.

Motorists cautioned against deer running across roads

Motorists should use extra caution at this time of the year to avoid hitting deer.

The New Jersey Division of Fish, Game, and Shellfisheries said today that fall is the period of the year when deer are most apt to cross roads at any hour of the day or night.

Deer are now often on the move since it is their normal rutting period, human activity in the woods is high, and dogs frequently disturb the deer.

The division advised motorists to reduce car speed on rural roads, watch for deer at all times, and heed the warning of deer-area signs posted along roads.

Deer may bound from the woods, an open field, or a road-side ditch with no warning, as if from nowhere.

RITE AID

RITE AID 26 INCHES WIDE JUMBO ROLL GIFT WRAP
PAPER-65 SQ. FT. OR FOIL-22 SQ. FT.
99¢ EACH

STICK ON BOWS
BAG OF 25
39¢

FRUIT CAKE
IN DECORATIVE REUSABLE TIN
1 1/2 LB.
99¢

BRUT 33 GIFT SET
COLOGNE AND SPLASH ON LOTION
3 1/2 OUNCES
2 39
NO. 5043

COTY GIFT SET
EMERAUDE MIST & TALC
2 99
No. 902

RITE AID BATTERIES
'C' OR 'D' CELL
PKG. OF 2
33¢

HAI KARATE TRAVEL CASE
AFTER SHAVE
STICK DEODORANT
AND SHAVE LATHER
3 99
NO. 100

WE RESERVE THE RIGHT TO LIMIT QUANTITIES

GIVE YOUR BUDGET a Holiday

CHRISTMAS CANDY
ASSORTED FLAVORS
39¢ EACH

DESERT FLOWER GIFT SET
SHAKER TALC AND COLOGNE
2 39
NO. 2887

TIE ON NOVELTY ORNAMENTS
33¢ EACH

SANTA-LITE 35 LIGHT MINIATURE SET
1 59
NO. 47326

AQUA VELVA THE SMART SET
COLOGNE AND AFTER SHAVE
1 39
NO. 83931

MON TRIOMPHE GIFT SET
COLOGNE AND AFTER SHAVE
2 OZ. EACH
4 49
NO. 47326

CLAIROL SON OF A GUN
1200 WATTS
HAIR DRYER
16 99

CONAIR PRO GUN
1000 WATTS
HAIR DRYER
11 49

THE HOT TOP
HOT LATHER DISPENSER
BY SCHICK
9 99

NORELCO ROTARY RAZOR
TRIPLEHEADER
32 99

GILLETTE SUPER MAX SWIVEL
ROUND BRUSH DRYER
17 49

PHILLIES BLUNT
CIGARS
5 PACK
37¢

ANACIN TABLETS
BOTTLE OF 100
1 33

CREST TOOTHPASTE
REGULAR OR MINT
89¢
7 OZ. TUBE

LISTERMINT MOUTHWASH
24 OZ. BOTTLE
1 39

OLD SPICE STICK DEODORANT
MUSK, HERBAL
REGULAR OR LIME
2.5 OZ.
79¢ EACH

CORICIDIN 'D' DECONGESTANT COLD RELIEF TABLETS
99¢
PKG. OF 25

SUAVE SHAMPOO
LEMON, TANGIER, HONEYBUCKLE, HYACINTH, JASMINE OR STRAWBERRY
69¢
16 OZ. BOTTLE

Make this Christmas a special one....

Visit the **ST. PAUL CATHOLIC BOOK AND FILM CENTER** nearest you

FOR INSPIRING GIFTS THAT WILL LAST THE WHOLE YEAR THROUGH!

78 Fort Place
Staten Island, N.Y.
212-447-5071

59 East 43rd St.
New York, N.Y.
212-986-7580
(At Grand Central)

625 E. 187th St.
Bronx, N.Y.
212-584-0440

THE IDEAL GIFT
The Vatican II Sunday Missal (\$5.95 & up)
The Vatican II Weekday Missal (\$11.95 & up)
The Liturgy of the Hours in one volume (\$8.50 & up)
Lives of Saints • Bibles • Children's Books •
Records • Cassettes • Prayerbooks • Religious
Articles • Nativity sets • and MORE!!

OPEN DAILY 8:30 a.m.-9:00 p.m.
Mon.-Sat. until Christmas

RITE AID **249 FRANKLIN AVE.**
NUTLEY **NEW JERSEY**
Pharmacy Phone 667-3174



Choral Preparations — Members of Belleville High School's Mixed Chorus rehearse for tonight's Christmas concert under the direction of Thomas Finetti. The high school orchestra also will perform this evening.

Concert at 8 p.m.

Belleville High School's Music Department will present its annual evening Christmas Concert tonight at 8 in the high school auditorium.

The concert will feature the high school orchestra and chorus, under the direction of Edwin Black and Thomas Finetti, respectively, in holiday favorites.

In the spotlight is Bach's Christmas Cantata, "For Unto Us a Child is Born," performed by the mixed chorus, a student chamber orchestra, and by guest soloists Curtis Watkins, Donna Jean Shutz and Wendell Parr.

Admission to the annual concert is one dollar.

Belleville police close down Rt. 21

Icy rain causing hazardous driving conditions forced Belleville police to close down a section of Route 21 for more than 50 minutes Tuesday morning.

Local traffic authorities decided to close the stretch of state road between Greylock Parkway and the Rutgers Street bridge because of the treacherous highway surface after a series of accidents occurred, none serious, involving five cars.

"When we arrived on the scene (about 9:30 a.m.) we saw numerous

cars going into spins, along with some minor accidents," stated Captain Robert Russomano, head of the Belleville Police Traffic Division. "We closed the section of the road until salt trucks came."

While awaiting the state salt trucks, Belleville police opened one lane to traffic and allowed autos to proceed single file at 35 mph.

The flow of cars eventually melted the ice and another lane was opened until eventually the entire route section was clear, said Russomano.

Trial 3 a.m. bar curfew coming

Continued from page one and reports only two taverns might be considered "problems" for his officers. "But it makes little difference whether we have one problem at 2 o'clock or an hour later," Saletta believes.

McCreery even takes issue with that premise however. "By staying open

until 3 a.m., it's a different kind of problem because now we'll have people from other towns coming to Belleville for a last drink."

Attorney Scott has ruled all five Commissioners can vote on the 3 a.m. closing proposal "since we are amending an ordinance that can be

changed only by the Board of Commissioners as opposed to the ABC (excise board)." Commissioner Mary Santore, who is indirectly involved through family with a local tavern, has disqualified herself from voting on disciplinary matters that come before the Town Commission as the municipality's ABC or excise board.

Twenty-four licenses in Belleville signed the petition presented publicly for the first time Tuesday night. The petition asks for a blanket 3 a.m. closing hour, but Saletta says the amendment he'll sponsor will limit the extra hour to Friday and Saturday nights.

The petition states, in part, that "the purpose for requesting this change is to enable us to be competitive with Newark, Clifton, Passaic, etc." Clifton and Passaic permit bars to remain open until 3 a.m. seven nights a week.

Saletta says he feels strongly about the 3 a.m. law because "I don't think we are doing enough for

some of the local this a trial and a chance." He says if the one hour extension doesn't work here, Town Commissioners the Commission can revert back to the 2 a.m. closing hour after the trial period. "The important thing did say, however, that the to remember is that our Belleville amendment support for this petition is would be forwarded to the a sign to our tavern owners New Jersey ABC for its that we are working with review as a matter of them. At least we'll give procedure."

Attorney Scott says Town Commissioners the Commission can revert back to the 2 a.m. closing hour after the trial period. "The important thing did say, however, that the to remember is that our Belleville amendment support for this petition is would be forwarded to the a sign to our tavern owners New Jersey ABC for its that we are working with review as a matter of them. At least we'll give procedure."

Make a date for

ROLLER SKATING

It's Great Fun!

Seasonally located Nov. 11 to 11 P.M.
Matinee Sat. Sun. & Holidays 2 to 5 P.M.
Roller Skating for Fun & Profit Parties

Livingston
Roller Rink
815 So. Livingston Av., Liv.
992-6161

Wallace & Tiernan promotes E. Kiesel

The Wallace & Tiernan Division of Pennwalt Corporation has announced the promotion of Edmund J. Kiesel to supervisor in instruments assembly at its plant here.

Wallace & Tiernan is a world leader in the manufacture of equipment for metering and controlling gases, liquids and solids, as well as in

the manufacture of instrumentation for water and pollution control systems.

Kiesel joined Wallace & Tiernan in 1948 and has been associated with various phases of instrument production. In his new position he is responsible for instrument sub-assembly at the plant.

GIVE A GIFT FROM THE BULOVA AMERICANA COLLECTION



BULOVA STURBRIDGE Bulova's Extra-Resonance. Rhythmic knotty case. Patch metal dial. 20" high. \$45.95.
BULOVA BRADGATE Bulova's Electronic. Digital. Shock-resistant. New. White. 21 1/2" high. \$79.95.
BULOVA CAMPUS Early Americana dial. Fine finish. Solid metal case. 21" high. \$79.95.

No winding ever! No slightly cords! Fully electronic... operates over a year on a single flashlight battery! Chronicle • Not illustrated • has date dial.

Come in and see the whole collection OPEN EVERY EVE TILL XMAS 10 A.M. - 9 P.M.

STOP IN FOR A FREE GIFT! NO PURCHASE NECESSARY

Vari Jewelers

12 Ridge Rd.
No. Arlington
998-0707
layaways!

Ten money-saving steps to a cozier home this winter.



When the wind starts blowing and the snow begins to fall, it's no time to be caught out in the cold. So plan ahead, follow these winterizing tips, and you and your family can stay cozy and save money, too.

- 1. Insulate!** Adequate insulation on your attic floor and side walls will conserve more energy than any other single item. And don't forget to insulate chimneys and pipes that carry hot air or water. Proper insulation can save you up to 30 percent on your heating bill.
- 2. Dial down.** Set your thermostat at 68 degrees or below during the day, 62 degrees or below at night. Once you find your lowest, comfortable setting, leave it there. Remember, every degree you put your thermostat over 68 adds about three percent to your heating bill.
- 3. Install storm windows and doors.** They'll seal out the cold and reduce heat loss by as much as 10 percent. Even plastic sheeting will help.
- 4. Weatherstrip and caulk.** Do it around windows and doors to seal cracks and gaps, keep cold air out and warm air in. Just a crack under a door can result in substantial heat loss — and wasted fuel dollars.
- 5. Keep the furnace in good shape.** A little routine maintenance can go a long way to save you money. Clean or replace warm-air filters every few months. Check the circulating pump on a hot water system, the water level if you have steam heat. Get your money's worth from the fuel you use.
- 6. Humidify.** Dry air makes rooms feel cooler than they really are. A room or furnace humidifier adds moisture to the air and saves fuel, because you'll be more comfortable at a lower temperature.
- 7. Don't heat unused rooms.** Turn off the register or radiator in rooms not being used. And close the door.

- 8. Don't block your source of heat.** Keep furniture and drapes away from registers or radiators. Don't make your furnace work harder for no reason.
- 9. Close the fireplace damper.** Don't let warm air rise up the chimney. Close the damper when not in use.
- 10. Close the doors.** Keep all exterior doors — as well as those to the garage, attic and basement — shut tightly. Bring the paperboy in when he collects. Say goodbye to friends inside. Keep cold air outside where it belongs.

These simple tips will enable you to stay warm and comfortable for less money. You'll also be helping to conserve supplies of precious fuel. This coming month has been designated Energy Conservation Action Month. Let's all pitch in!

Return this coupon now for a free copy of "Use Energy Wisely and Save Money," and "Insulation Guide." They'll tell how to use energy efficiently around the home, and how to purchase and install insulation.

Energy Tips, Box 100
Garden State, New Jersey 07027

Please send me these free guides. I have already paid for this guide.

Name _____

Address _____

City _____

State _____ Zip _____

Save Energy Now



YES!

Our LOBBIES are open to serve you every Saturday... 9:00 a.m. 'til noon

Why settle for just "drive-in" banking on Saturdays? **PEOPLES' hours are for PEOPLE**

Yes! We're open the days before Christmas and New Year's, 9A.M. 'til noon.

PEOPLES BANK

Welcome and HAPPY HOLIDAYS

PEOPLES BANK

Belleville, N.J.

FULL-SERVICE BANKING:

Mon. - Fri. - 9 a.m. - 5:30 p.m.
Monday evenings until 8 p.m.
Friday evenings until 8 p.m.,
Aitken Office Drive-In
EVERY SATURDAY, 9 a.m. - noon

MAIN OFFICE
Washington Ave. at Van Houten
AITKEN OFFICE
Franklin Ave. at Joramleon
TRI-CITY OFFICE
Bloomfield Ave. at Belmont
Call us at 759-1000

Classified

New Direct Line

667-3000

OR/759-3200

CLASSIFIED ADVERTISEMENTS ARE PUBLISHED IN BOTH SUNBANK NEWSPAPERS

THE NUTLEY SUN **THE BELLEVILLE TIMES**

RATES EFFECTIVE JANUARY 15, 1978

MINIMUM 15 WORDS FOR-
INCH RATES PER COL. INCH \$3.30
ONE INCH OR MORE \$4.50
TWO INCHES OR MORE \$5.50
FIVE INCHES OR MORE \$12.00
OVER TEN INCHES \$20.00

ASK ABOUT DISPLAY DISCOUNT RATE
FOR INSERTIONS RUNNING 26 WEEKS
DEADLINE FOR SPACE COPY AND
MATERIAL - 12 NOON TUESDAY

667-3000 759-3200

USE LIST BELOW FOR QUICK REFERENCE!

ANNOUNCEMENTS
AUTOMOTIVE
AUTO PARTS & SUPPLIES
AUTO SERVICE
AUTO WRECKERS
CAMPER & TRUCKS
MOTORCYCLES
BUSINESS OPPORTUNITIES
BUSINESS SERVICES
AIR COND. & REFRIG.
ALUM. PROD.
BATHROOMS & KITCHENS
CARPENTERS & BUILDERS
CARPETING & SERVICE
CEILING
CHIMNEY SERVICE & REPAIR
CLEANING & DYEING
CONSTRUCTION
DRIVEWAYS
ELECTRICIANS
EXTERMINATORS
FENCES
FLOOR SERVICE
HOME IMPROVEMENTS
INCOME TAX
INSURANCE
JUNK DEALERS
LANDSCAPING
MAINTENANCE
MISC. SERVICES
MOVING & STORAGE

PAINTING
PET TRAINING
PIANO TUNING
PLUMBING & HEAT-
RECREATION
ROOFING & SIDING
TILE
TV SERVICE
UPHOLSTERY
CHILD CARE
NURSERY SCHOOLS
FOR SALE
ANTIQUES
BOATS
Flea Markets
GARAGE SALES
MERCHANDISE
PETS
WANTED TO BUY
HELP WANTED
SITUATIONS WANTED
INSTRUCTIONS
LOST & FOUND
REAL ESTATE
BOARDING
FOR RENT
FOR SALE
FURNISHED ROOMS
REAL ESTATE WANTED
SUMMER RENTALS
WANTED TO RENT

Be Wise - Advertise

The enclosed coupon is for your convenience in placing a minimum size ad to run in the Classified Section of the Nutley Sun & Belleville Times/News.

DEADLINE - Tuesday 12 Noon.

Name _____ Address _____ City _____ State _____ Zip _____

Phone _____ Amount Enclosed _____ Date Desired _____ Classification _____

Maximum Rate Up To 15 Words For \$1.30 3 Average 150 Words Per Line \$1.30 Additional Words \$1.30

Make Check or money order payable to _____

Nutley Sun, 777 Bloomfield Ave., Nutley, N.J. 07110

For Additional Information, Call 667-3000 or 759-3200

AUTOMOTIVE

AUTO SERVICE

Customized Work

- Vinyl Tops & Replacements
- Sun Roofs
- Body Side Molds

TOPS-UNLIMITED
46 Jaramon St., Belleville
Call For FREE Estimate
751-1390

AUTO PARTS & SUPPLIES

MODERN AUTO PARTS DISCOUNT PRICES!

- Foreign & Domestic
- Complete Machine Shop
- High Performance Street & Track
- Von Stueff
- Car & Truck Points
- Mini Bikes

OPEN SUNDAYS
82 RUTGERS ST. BELLEVILLE
759-5555

FOR COMPLETE LINE OF AUTO PARTS AND ACCESSORIES

IT'S STRAUSS STORES
48-48 Franklin Ave., Nutley
667-3962
STRAUSS EXCLUSIVE DRIVE-IN INSTALLATION CENTER

WE SELL USED MOTORS
\$150 for most cars. Rebuilt from \$125. Also for most cars. Will install for moderate price. All work guaranteed.

DON'T RUSS - CALL US
345-9220 327-8976

AUTO WRECKERS

BILL'S AUTO WRECKERS
\$30 AND UP

FOR CARS OR TRUCKS ANY CONDITION

Belleville Pike, No. Arlington
998-0966 437 991-0081

BUSINESS SERVICES

ALUM. PROD.

ALUMINUM SIDING

- Gutters & Leaders
- Alum. Prime Replacment Windows
- Storm Windows & Screens
- Awnings & Patio Doors
- Shower Doors, Tub Enclosures
- Awning Type Windows
- Siding & Roofing
- Screen & Glass Repairs

GILD-N-SON
328 BELLEVILLE PIKE, KEARNY
We Manufacture & Install
991-6222

ALUMINUM - STORM WINDOWS & SCREENS

Sales & Service
Replaced or Repaired
We Pick Up & Deliver
Free Estimate

664-3998

GERMAN CRAFTSMAN ALUMINUM SIDING

- Roofing
- Windows
- Gutters & Leaders
- We Also Remodel
- Kitchens
- Baths
- Basements

"LOWEST PRICES" Free Estimate

Klaus English Construction Co.
661-2411

CARPENTERS & BUILDERS

SPECIALIZING

- CARPENTRY WORK
- DORMERS
- ADDITIONS
- BASEMENTS
- KITCHENS

Free Estimates
759-3210

CARPENTRY - SHEETROCKING
CEILING - PORCHES - STAIRS
GENERAL REPAIRS - DOORS
SPECIALIZING IN
SMALLER WORK

PAINTING & EXTERIOR
INTERIOR

FREE ESTIMATES
REASONABLE RATES

CALL BOB
743-6826

ALL CARPENTRY WORK & CUSTOM KITCHEN CABINETS & FORMICA WORK.

Refinish your old cabinets with Formica.
Call 667-2327 anytime.

CARPENTRY WORK NO JOB TOO SMALL

Immediate delivery on kitchen cabinets. Additions, bathrooms, suspended ceilings, aluminum siding, roofing, brick steps, awnings. Licensed carpenter. Fully insured. FRED CARUSO

751-7490

CARPENTRY & SERVICE

WE PROMISE ONLY WHAT WE CAN DELIVER

"Superior Quality & Service"
RUGS, Scotchguard, Scrubbed & Steamcleaned.
No Water Left in Rug!
Residential - Commercial

CHARGE IT!
Master Charge or Visa Charge
WE GUARANTEE
Our Work To Be The
Finest In The Area
REASONABLE RATES

DAN LOGAN RUG SERV.
667-1755

CATERING

BUSINESS/LUNCHEON RESTAURANT
ESSEX COUNTY LOCATION
MUST-SEE DUE TO HEALTH

CALL 759-7684

OR 483-2745 AFTER 6 P.M.

BUSINESS OPPORTUNITIES

Call Us For Prompt Electrical Service

D & D ELECTRIC

58 Bellavista Ave.
Belleville - 751-2782
Lic. #270

FOR PROMPT SERVICE CALL

MARSH ELECTRIC INC.
667-2426

220 VOLT SERVICES INSTALLED
FREE ESTIMATES
ALL WORK GUARANTEED
Lic. #4185

ANDERSON ELECTRICAL CONTRACTING

Residential & Commercial
Services
Convenience-lighting outlets
Washer-Dryer Lines
Security Lighting-Repairs
Call 748-2554
For Safety & Dependability - Service

PLANT & GIFT SHOP

On main street in Belleville.
Specializing in plants and accessories.

Call
751-1150 or 338-1956

BUSINESS SERVICES

ALUM. PROD.

ALUMINUM SIDING

- Gutters & Leaders
- Alum. Prime Replacment Windows
- Storm Windows & Screens
- Awnings & Patio Doors
- Shower Doors, Tub Enclosures
- Awning Type Windows
- Siding & Roofing
- Screen & Glass Repairs

GILD-N-SON
328 BELLEVILLE PIKE, KEARNY
We Manufacture & Install
991-6222

ALUMINUM - STORM WINDOWS & SCREENS

Sales & Service
Replaced or Repaired
We Pick Up & Deliver
Free Estimate

664-3998

GERMAN CRAFTSMAN ALUMINUM SIDING

- Roofing
- Windows
- Gutters & Leaders
- We Also Remodel
- Kitchens
- Baths
- Basements

"LOWEST PRICES" Free Estimate

Klaus English Construction Co.
661-2411

CARPENTERS & BUILDERS

SPECIALIZING

- CARPENTRY WORK
- DORMERS
- ADDITIONS
- BASEMENTS
- KITCHENS

Free Estimates
759-3210

CARPENTRY - SHEETROCKING
CEILING - PORCHES - STAIRS
GENERAL REPAIRS - DOORS
SPECIALIZING IN
SMALLER WORK

PAINTING & EXTERIOR
INTERIOR

FREE ESTIMATES
REASONABLE RATES

CALL BOB
743-6826

ALL CARPENTRY WORK & CUSTOM KITCHEN CABINETS & FORMICA WORK.

Refinish your old cabinets with Formica.
Call 667-2327 anytime.

CARPENTRY WORK NO JOB TOO SMALL

Immediate delivery on kitchen cabinets. Additions, bathrooms, suspended ceilings, aluminum siding, roofing, brick steps, awnings. Licensed carpenter. Fully insured. FRED CARUSO

751-7490

CARPENTRY & SERVICE

WE PROMISE ONLY WHAT WE CAN DELIVER

"Superior Quality & Service"
RUGS, Scotchguard, Scrubbed & Steamcleaned.
No Water Left in Rug!
Residential - Commercial

CHARGE IT!
Master Charge or Visa Charge
WE GUARANTEE
Our Work To Be The
Finest In The Area
REASONABLE RATES

DAN LOGAN RUG SERV.
667-1755

CATERING

BUSINESS/LUNCHEON RESTAURANT
ESSEX COUNTY LOCATION
MUST-SEE DUE TO HEALTH

CALL 759-7684

OR 483-2745 AFTER 6 P.M.

BUSINESS OPPORTUNITIES

Call Us For Prompt Electrical Service

D & D ELECTRIC

58 Bellavista Ave.
Belleville - 751-2782
Lic. #270

FOR PROMPT SERVICE CALL

MARSH ELECTRIC INC.
667-2426

220 VOLT SERVICES INSTALLED
FREE ESTIMATES
ALL WORK GUARANTEED
Lic. #4185

ANDERSON ELECTRICAL CONTRACTING

Residential & Commercial
Services
Convenience-lighting outlets
Washer-Dryer Lines
Security Lighting-Repairs
Call 748-2554
For Safety & Dependability - Service

PLANT & GIFT SHOP

On main street in Belleville.
Specializing in plants and accessories.

Call
751-1150 or 338-1956

BUSINESS SERVICES

EXTERMINATORS

TERMITES

\$175

- ANY HOUSE
- ANY SIZE

10 YEAR GUARANTEE

641-4722

GARDEN STATE EXTERMINATORS

ROACHES

RATS

MICE

Any Job \$24.95

779-8694

Allwood Exterminating Co.

FLOOR SERVICE

KILLER FLOOR SERVICE

- SANDING
- REFINISHING
- INSURED

CALL 759-5954

FLOORS

SANDED & REFINISHED WAXED

American Floor Sanding Co.
George Inglis 667-5887

FLOOR WAXING

RUG SHAMPOOING

All work done by owner
Bob Jennings

667-1121

HOME IMPROVEMENTS

For Free Estimate CALL 483-2793

Jerry Capanear

General Contractor

KITCHENS

SPECIALIZING

- KITCHENS
- BATHROOMS
- EXTENSIONS

PLUMBING

- ROOFING
- PANELLING
- WINDOWS
- CEILING
- SIDING
- DORMERS
- BASEMENTS

We sell and do our own work
No middlemen

JOMAR CONSTRUCTION

HOME IMPROVEMENT

Carpentry & Masonry
Bathrooms - Kitchens etc.
No job too small
FREE EST. AFTER 4 P.M.

478-5060

ELECTRICIANS

BELLO'S ELECTRIC SERVICE

COMPLETE HOME WIRING
WE SPECIALIZE IN
100 AMP, 220 LINE
FREE ESTIMATE
CALL ANYTIME
667-0919

Insurance Estimates Optional

DE LUZO CONTRACTING, INC.

Industrial - Commercial
No job too small or too far.
FREE ESTIMATES
CALL 661-2937
License #4801

Call Us For Prompt Electrical Service

D & D ELECTRIC

58 Bellavista Ave.
Belleville - 751-2782
Lic. #270

FOR PROMPT SERVICE CALL

MARSH ELECTRIC INC.
667-2426

220 VOLT SERVICES INSTALLED
FREE ESTIMATES
ALL WORK GUARANTEED
Lic. #4185

BUSINESS SERVICES

HOME IMPROVEMENTS

ALUMINUM SIDING

- Additions
- Carpentry
- Masonry
- Paving

Up To 7 Years Financing - Free Estimate

DAVENPORT HOME IMPROVEMENT CORP.
482-9361

HOME IMPROVEMENTS

MASONRY

- CELLARS WATERPROOFED
- ROOFING & ROOFING REPAIRS
- RETAINING WALLS

5% DISCOUNT WITH THIS AD

10% DISCOUNT FOR SENIOR CITIZENS

FREE ESTIMATES

PROFESSIONAL CONTRACTOR

- Porches
- Sundecks
- Garages
- Dormers
- Roofing
- Gutters
- Bathrooms
- Kitchens
- Remodeling
- Finish Basements & Attics
- Additions

ALUMINUM SIDING

Free Estimate

484-4605

PAVING

EXCAVATING

- LANDSCAPING
- WATER PROBLEMS

Service & Experience
ARMANDO VACUARO
759-6440

ATTENTION

JIM LUONGO HOME IMPROVEMENTS

- Aluminum Siding
- Lead Paint Removal
- Modern Kitchens & Additions
- Roofing & Dormers
- Basement Remodeling

FREE ESTIMATES 661-3210

TONY NICOSIA & SONS

Alterations Specialist

- Kitchens
- Bathrooms
- Room Additions
- Also Masonry Work
- Stairs
- Sidewalks
- Retaining Walls

751-0743

DO YOU NEED QUICK & QUALITY HOUSE REPAIR SERVICE?

- Roofing
- Painting
- Carpentry, etc.

CALL LINCOLN
622-7963 days
239-7219 eves.

D.C. HOME IMPROVEMENTS

CALL MR. CRAWFORD
242-2980

FLOOD INSURANCE NOW AVAILABLE

JOHN C. GILBERT
BROKER
661-0595 667-8000

BUSINESS INSURANCE

Package Discounts
All State Ins. Agency
Plate Glass
Flood Coverage
BROUILLARD INS. AGCY
188 Chestnut St., Nutley
667-2900

JUNK DEALERS

RECYCLE

- ALL NEWSPAPERS \$2 per 100 lbs.
- MAGAZINES
- BRASS
- COPPER
- ALUMINUM

HIGHEST PRICES PAID!

ALLIED WASTE INC.
61 Melrose Ave., Wallington N.J.
473-7638

BUSINESS SERVICES

LANDSCAPING

GRASS CUTTING & LANDSCAPING SERVICE

Clean up, lawn & rock
Quality work weekly or every
10 days service. SPECIAL
RATES for Sr. Citizens.
SPECIAL GRIENTING only
service

661-2299

Call after 5 p.m.

MASONRY

MASON CONTRACTOR

Sidewalks, patios, steps,
retaining walls, free es-
timates. Call
ANTHONY GAGLIUSTO
472-8484

MASONRY SPECIALISTS

Our Specialty: Steps,
Sidewalks, Patios,
Fireplaces, Brick Veneering,
Carpentry, Paneling,
Sheetrocking, Stucco. No job
too big or too small.

ALL MASONRY WORK
"Before You Decide on a Job"
Check Our Estimate FIRST!

MASONRY SPECIALISTS

- Plastering
- Sidewalks
- Patio
- Retaining Walls, etc.
- Quality Workmanship
- Insured & Reasonable

667-3790 or 667-9293

MISC. SERVICES

FLOOD INSURANCE

Don't be
caught short again! BROUILLARD INS. AGCY. 188 Chestnut St., Nutley. 667-2900.

PAINTING

CARPENTRY

- WALLPAPER
- SANITAS
- PANELLING

VICTORY
991-3745

WE REPAIR

- Washers
- Dryers
- Refrigerators
- Freezers
- Air Conditioners

E. CROSLEY SERVICE
667-9278

LOCKSMITH

Auto & Home Security

Industrial & Commercial
24 HOUR
EMERGENCY SERVICE
748-7664

HANDYMAN WHY PAY MORE

- Gutters
- Roofs
- Windows
- Carpentry
- Leaky Faucets

"CALL JOE" 759-0724

BELLEVILLE-NUTLEY GLASS CO.

78 Rutgers St., Belleville
Complete Glass Service
Van Overalls
Homes - Store Fronts
Industrial Glassing

751-0835 430 751-0844

LANDSCAPING

AL'S TREE SERVICE

Trimming & Removal
Of All Size Trees.
Free Estimate.
939-6670

MIKE'S LANDSCAPING

Sod, Railroad Ties and
General Maintenance.
Call Mike Ippolito
235-0798 667-3057

BLAIRS GARDEN CENTER

552 Centre St., Nutley
(Cor. Ridge Rd.) 667-0991

You One Stop For All Your
• LIVING CHRISTMAS TREE
(Balled & Burlaped)
• CUT TREES
• BALSAM • DOUGLAS FIR • SCOTCH PINE
• GRAVE BLANKETS
• CUSTOM MADE WREATHS
• CUT GREENS & CANAL COAL

Hours till Christmas
Mon. thru Friday 8-8 p.m.
Saturday 8-5 p.m.
Sunday 9-5 p.m.

ANNOUNCEMENTS



ELECTROLYSIS

For Men and Women
Unwanted Hair
Permanently Removed

FOR SALE

MERCHANDISE

TWO BICYCLES
boy's 10 speed
Silver Chest — brand new.
Set of weights.
Weight lifting bench —
brand new.
Call after 5 p.m.
667-1519


Split, Delivered & Stacked
\$55. a cord.
Call 759-1573
after 4 p.m. 7/29

PETS

FEEL SAFE!
Board your very special dog or cat at ED JOHNSON'S private kennel. Modern facilities. "Tender Loving Care" to all visitors.
640 Riverside Ave.,
Lyndhurst, N.J. 438-0932
12/29

DOG OBEDIENCE
ALL BREEDS
8 LESSON COURSE \$30
ENROLL NOW FOR
NUTLEY CLASSES
N.J. DOG COLLEGE
654-6672

FREE
ADORABLE
PUPPIES
(females)
Perfect for Christmas gifts.
Call 759-8128

 **ANIMALS**

In detail
from photo.
Gift idea. 8x10 - \$10.
12x16 - \$15.
Satisfaction guaranteed.
Call 777-8368 5/18

WANTED TO BUY

PAYING

Up to \$50 lb. for sterling
verware & coins.
All U.S. stamps wanted.

ORADELL COIN
340 Kinderkamack Rd.
Oradell, N.J. 265 5310

STAMPS

CALL 527-8011
ELIZABETH, N.J.

ORIENTAL RUGS
 Lady Wishes to Purchase
 Oriental Rugs. Will pay
 higher than dealer prices

487-2422 6/1

**DIAMONDS & JEWELRY
BOUGHT FOR CASH
HIGHEST PRICES PAID**

N.J. DIAMOND CO.
30 Glenwood Ave., Bloomfield
CALL 748-0158

for furniture, antiques, bric-a-brac, oriental rugs. Contents of homes, etc. House Sales Conducted!

THE AUCTION BLOCK
-239-8998

HIGHEST PRICES PAID FOR
BEDROOMS
LIVING ROOMS
DINING ROOM SUITES
LATE MODEL
REFRIGERATORS
CALL 624-5530
EVES 432-4340

"TOP PRICES PAID"
for Antiques, China, Glass,
Furniture, Jewelry, Silver,
Rugs, etc. Will buy one item

51-1587 759-7369
1/20
Wanted for Cash

**ORIENTAL RUGS
ANTIQUES**
Private Buyer 224-6205
4/27

EARN MONEY!
We'll help organize
a paper drive

**PROMPT,
RELIABLE SERVICE
SINCE 1940**

Hazel St.) CLIFTON

Hazel St.) CLIFTON

Newark City Hospital demolition starts this week

The old Newark City Hospital, a landmark in the Central Ward since the turn of the century and forerunner to Martland Medical Center, is to be demolished.

The four-story brick structure on Fairmount Avenue, which opened in 1899, yielded most of its patient-care functions in 1954 when Martland was opened directly behind it on Bergen Street. Both structures were taken over by the College of Medicine and Dentistry of New Jersey in 1968 when the college moved to Newark.

The decision to raze the old building — demolition will start this week — was made by the school in

view of exorbitant costs for its maintenance, coupled with its only marginal use. For the past few years the building has housed mostly support services for Martland, such as its volunteers, social services and engineering offices.

Relocation of these and the few remaining outpatient health care services is already underway.

Demolition of the building will be accomplished relatively unobtrusively — no wrecking ball or dynamite will be used — in stages that will take about a year. Special dust control measures and other precautions will be taken to minimize impact on the local community.

341 at BHS earn honors

Twenty-nine students at Belleville High School earned the distinction of being awarded High Honors for the first marking cycle.

Of the total number, nine were seniors while 11 each juniors and sophomores made the list.

Seniors on the High Honor roll include Ann Calabrese, Susan Carissimo, Patricia Connelly, Steven Cosentino, David Dacey, Lisa Hart, Lisa Hayes, Edmundo Lijo and Jeffrey Schenke.

Juniors who made the list are Dean Bennett, James Cali, Teresa Cassin, Joyce Cozzi, Andrew Day, Edwardo Grisolia, Scott Jackson, Susan Mask, Nikhil Parekh, Thomas Rosamilia and Kristine Rovell.

Among the sophomores named to the list are Marie Clarizio, Anthony Colasurdo, Kathy Constantino, Linda Dalvia, Anthony DeMeola, Michael Kapuscinski, Joseph LaMonica, Christopher Musmanno, John Norton, Chris Olarteich and Michael Sheldon.

Three-hundred twelve students earned inclusion on the list of those awarded Honors for the last term. According to classes, they are:

One-hundred twenty seniors, including Paula Angelino, Catherine Appenzeller, Patrick Barbone, Rita Bono, Michele Bottitta, Camille Buccarelli, Maria Calla, Mary Calomonic, Andrea Caputo, Donna Casale, Timaric Cerno, Joann Cipponelli, Nita Chino, Theresa Ciero, Laurie Clark, Raymond Corvieve, Cynthia Coris, Corie Costa, Annette Cozzarelli, Richard Cuzzi and Marianne DiCunzio.

Ernest D'Angelo, Kenneth Davenport, Lisa DellaTorre, Laurie Demarg, Gerald DiGiulio, John Dillon, Paul Donahue, Maurice Doyart, Linda Fabian, Leatrice Raffaele, Michael Falarzano, Theresa Feder, Joseph Flynn, Philip Francisco, Lauren Fratella, Sam Fiorino, Tomma Gioino, Debra Guarino, Glen Magin, Jill Harris, Annette Herter, Candace Hollander and Judith Iaculi.

Donna Iannia, Jeffery Jarman, Richard Kosturko, Susan Kotz, Michele Lelio, Jamie Lesinsky, Anthony Longo, Edmund Lowry, John Lupo, Steven Lucas, Michael Maksym, Michael Mango, Sharon Marotti, Lisa Masucci, Colleen McCartney, Theresa McHugh, Patricia McLaughlin, Louise Meo, Shirley Mickens, Dominick Mobilio, Mary Montanelli, Donna Mundy, Donna Newcomer, Garry Nicoletti, Bernadette Pappalardo, Linda Peterson, Pauline Pugliese, Susan Ranucci, Lisa Raucio and Della Kelly.

Carolyn Restivo, Donald Roll, Deborah Rolph, Angela Salathino, Richard Sanders, Joanne Santiglia, Anthony Satriano, Deborah Schneider, Donna Shafter, Barbara Simeone, Lisa Simcal, Susan Smith, John Steinfeld, Jerry Sorce, John Steinfeld, Anne Stevenson, Vito Tamborino, Theresa Tatoli, Mauro Tucci, Bernadette Turano, Maryann Valvano, Pamela Vanderzant, Deborah Waldhart, Kevin Waters, Theodore Zangari and Donna Zarr.

Juniors who attained Honors this marking cycle number 108 and include Maria Aiello, Patricia Bagin, Jean Bedford, Donna Blaser, Daniel Borgo, Edwin Brady, Linda Capatner, Valerie Castrovilla, Vincent Celio, Nicholas Centanni, John Christiano, Mary Connelly, Lisa Cord, Anthony Cosentino, Marie D'Agostino, Doreen D'Ambr, Jennifer Debelak, Victor DeFlorio, Barry Delaney, Michael DeMayo, Liliane DeMeo, Linda Demarg and Robert DiStasi.

Diane Donald, Anthony Dondarski, Felicia Falarzano, Donna Fantacchi, Anita Fargoli, Joseph Ferraro, Annemarie Frederick, Richard Gscheke, Margaret Gidday, Jeanette Gaudy, Barbara Giordano, Marilyn Giordano, Lisa Giovino, Doreen Gonnella, Linda Gonzalez, Andrea Goris, Ralph Guallieri, Gary Guancione, Nicola Guarno, Henry Guercio, Barbara Hagan, Thomas Henry, Keith Isler, Denise Juliano, Lorraine Kempainen, Jacqueline Kiernan, Susan Klein, Pamela Klingler, Philip Larzo, Bernard Lepore, Cynthia Livingston, Deborah LoCoCo, John Lombard, Diane Lombardi, Joseph Longo, Joanne Lucas, Susan MacArthur, Donna Marie Malanga, Joann Marotto, Maria Marziliano, Cheryl McKinney, Renee Montella, Cynthia Morel, Eileen Morrison, Joseph Mostillo, Gabriel Nazario, Joanne Nufrio, Kim Pace, Lisa Paicico and Ann Paladino.

Deborah Perrone, Matthew Pica, Georgann Polite, Diana Pontrella, Ronda Racopetti, Julie Raricci, Suzanne Roman, Christopher Rinaldi, Sherry Ring, Glen Rischel, Sharon Rogers, Robin Romano, Janet Rossi, Kevin Sands, Angelo Saminelli, Paula Santumo, Annette Socca, Roger Squerra, Tom Simsi, Leonard Sibus, Elke Smith, Benjamin Spagnoli, Toni Sperduto, Rita Spina, Branda Stallone, Jean Stefanelli, James Tensfeldt, Lori Tucci, Thomas Vangieri, Patty Vincent, Carl Vocaturo, Mary Alice Wancho and Denise Zarr.

Sophomores who earned Honors are Eileen Anicella, Lawrence Araneo, Mary August, Edward Aulisi, Christine Bini, Maureen Brady, Lori Buccarelli, Joann Cancelliere, Tammy Carroll, Laura Caraso, Lisa Cellacone, Gary Cico, Theresa Cifelli, Steven Caffey, Joseph Colone, Maureen Conway, Mary Coppola, Peter Cosentino, Susan Costa, Maureen Danvik, Diane DeAngelis, Leslie DeTullo, Diane DePrizio, Joseph Diaco, Joseph DiPaolo, Lorraine Dixon, Laurie Diquinez and Monica Edwards.

Lisa Encke, Rafeley Esquillo, Cathi Fabian, Gary Farrar, Tina Feder, Peter Ferraro, Lucille Filangieri, Joseph Fischer, Donna Fotie, Rosanne Fortunato, Adam Frank, Giugiana Fratella, Joanne Frederick, Stephen Galt, Sharon Giamio, Renee Giordano, Robin Giordano, Mattie Giorno, Joseph Grimaldi, Gladys Greco, Scott Granti, Joseph Guarno, David Haight, Thomas Hammill, Patricia Hill, Gail Hochstahl, Joyce Iacullo, Elena Ippolito, Stephanie Kirgevas, Catherine Leone, Cheryl Ann Lewis, Elizabeth Loewenstein, Gerard Long, Debra Lowack, Laura Luzzi and Philip Masi.

Marilyn McCaffrey, Diane McGuire, Carol Meholsky, Lisa Monar, Camille Moradan, Angela Nicolao, Thomas O'Keane,

Pamela Owens, Richard Pellechio, Lucy Perna, Christian Perrelli, Lori Pickett, Jeffrey Pico, Susan Pontrella, Glenn Raucio, Louis Riaccio, Charlotte Roberts and Rose Ellen Ryan.

Kim Santangelo, Cynthia Scheder, Robert Scherrer, Palma Schiavo, Lisa Schillon, Karen Succi, Mary Snyder, Catherine Stangi, Cathy Tattoli, James Taylor, Jane Tirilla, Joseph Tronotana, John Vaccaro, Nicholas Vitelli, Richard Vitelli, Dorothy Widuch, Priscella Williams, Jacqueline Wis and Antoinette Zungri.

Fairleigh Chamber Choir performs tonight at track

The Chamber Choir of Fairleigh Dickinson University's Rutherford Campus will perform at the Meadowlands Race Track tonight between 6:30 and 9:30. The group is under the direction of Louis Hooker, professor of music.

The choir will entertain with holiday selections as part of the Sports Authority's Christmas Celebration at the Meadowlands.

Assisting Professor Hooker as conductor will be six Fairleigh Dickinson student conductors including William Alexander of Belleville and Barbara Chase of Nutley.

In addition to being director of choral activities and coordinator of music education at Fairleigh Dickinson University's Rutherford Campus, Professor Hooker is founder and principal conductor of the New Jersey Schola Cantorum.

GANTNER'S INC.

FOR HARDWARE, HOUSEWARES, HOME FURNISHINGS & GIFTS STATIONARY & BABY ACCESSORIES

CHRISTMAS SALE

20% OFF

ALL CORELLE LIVING WARE
ALL CORNING WARE
ALL FARBER WARE
ALL REVERE WARE

10% OFF

ALL BLACK & DECKER POWER TOOLS

WEAREVER SUPER SHOOTER
COOKIE MAKER \$14.99

PRICES EFFECTIVE TILL DEC. 24th
160 FRANKLIN AVE., NUTLEY
"OUR 52nd YEAR"
OPEN MON.-FRI. 9 TO 9 TILL DEC. 23rd
667-6622

IN TIME FOR CHRISTMAS GIFT SPECIAL

THURS. FRI. SAT. & SUN. ONLY!
Dec. 15-18, 1977

UP TO **30% OFF** ON ALL WATCHES

OPEN: Mon.-Fri. 10-9 Sat. till 6 Sun. 11-5

Sofia JEWELERS
FINE JEWELRY & GIFTS

PARTY PLATTER SPECIALS!

\$2.25 PERSON...INCLUDES

- Ham
- Turkey
- Salami
- Roast Beef
- Salads
- Pickles
- Olives
- Rolls & Bread
- Swiss & American Cheese

ALL PLATTERS GARNISHED & DECORATED
MINIMUM 12 PERSONS — EAT-IN TABLES AVAILABLE

VILLA DELICATESSEN

231A Franklin Ave., Nutley 667-2294

The gift that keeps giving...

For him or her — enjoy the relaxing comfort with a

RECLINER

From our collection of famous STRATOLOUNGER and BARCALOUNGER we have the perfect gift idea. Fits into any home decor, these recliners are crafted and designed for comfort. In a choice of Herculon, Nylon, decorator fabrics or easy-to-clean vinyls... and colors.

Attractively Priced From **\$169**

Kastner's Furniture
"FURNISHING FINE HOMES FOR OVER 50 YEARS"

492 FRANKLIN AVE. 667-1384 NUTLEY, N.J.
OPEN MON & FRI. EVES TILL 8:30 P.M. FREE CUSTOMER PARKING

Holiday Gift Ideas From BARRICINI

- French Chocolates
- Chocolate Gift Assortments
- "Country Style" Milk Chocolate
- Chocolate Miniatures
- Parlay Bars

NEW! FROM BARRICINI

- Pecan Patties
- Fruit & Nut Candy
- French Mint Meltaways
- Cherry Cordials

ALSO AVAILABLE!!
BARTON DIETETIC CHOCOLATE ASST'D. MINIATURE CANDY

167 FRANKLIN AVE., NUTLEY 667-7229

Christmas Gifts Center

AT THE **Franklin MEN'S SHOP**

AT THE CENTER
228 FRANKLIN AVE. NUTLEY
667-0189

\$11.50

Arrow
America's Shirtmaker

The white shirt is back in fashion. But remember when white was the only fashion?

That was about the time Arrow started in the shirt business.

Elegant white shirts from the company that practically invented them. Arrow.

\$85.00

LONDON FOG

Westbury

Once you've got the only coat you need, you'll take the rough with the smooth without a care. Here, a western-styled Maincoat® of Carib® Cloth (an oxford weave of Dacron® polyester and cotton) that's ZePelt® protected against rain and stain and lined with a zip-out warmer of Parliament Plush Orion® pile.

London Fog gives you excellent coverage.

Val-Pak Coupon's Good Thru Dec. 24 Only

FRANKLIN MEN'S SHOP WILL BE OPEN MON.-FRI. 'TILL 9 P.M. — SATURDAYS 'TILL 6 P.M.

amusements

PLAY REVIEW

How do you solve a problem? Go see 'The Sound of Music'

By JOHN JURICH

A captain and seven children — what's so fearsome about that? Nothing really. The situation is fantastic as the Family Playhouse production of "The Sound of Music," which opened Friday night, proves.

The 1959 Rodgers and Hammerstein musical is based on the true story of Maria Augusta, a young, Austrian postulant, who became the governess and eventually the mother of the seven Von Trapp children immediately before the Second World War.

In the show, Maria is a flighty girl struggling to find her vocation. It is obvious to her superiors at the Nonberg Abbey that she is not suited to the religious life, but Maria remains convinced she is.

The Mother Abbess sends Maria to be the governess of the seven Von Trapp children. Maria immediately wins their favor but also the stern disapproval of their father, Capt. Von Trapp, a lonely widower who makes discipline the first rule of his house.

The captain has shut music, dancing and other reminders of his dead

wife out of his life and balks when Maria tries to reintroduce them. The ice on Von Trapp's heart melts, however, when the children enter singing and he begins to fall in love with Maria.

Unsure of her feelings, Maria steals off to the convent but is told by the Mother Abbess to return and give her love to the captain.

Meanwhile, the Nazis have annexed Austria, and Capt. Von Trapp, with his brilliant war record, is offered a commission in the German Navy, an offer it is death to refuse. His prospective bride, Elsa Schraeder, suggests he come to some accommodation with the Nazis, but Von Trapp refuses to compromise with evil and the marriage is off.

Enter Maria and a marriage is on. When the couple return from their honeymoon, the Nazis press Capt. Von Trapp for an answer, and he and Maria realize they must escape from Austria.

Promoter Max Detweiler, a scheming friend of the captain, provides them with their opportunity when he puts the family musical act on stage at a festival. The Von Trapps get away as the names of runner-up contestants are being

laboriously announced.

There is a close call as the Von Trapps hide out in the abbey. The lover of Liesl, the eldest daughter, is part of the Nazi search party and discovers the Von Trapps. He looks the other way, however, and the family escapes into the mountains.

The settings at the Family Playhouse are necessarily not as opulent as those in "The Sound of Music" movie, but erase Julie Andrews and the rest from your mind and enjoy this production. The songs of course are vintage Rodgers and Hammerstein and you can't help but leave singing them.

The cast is good to excellent, especially the children. I liked Cheryl Cucinello (Brigitta) the best, though Tammy Napolitano as the youngest child, Gretl, was also amazing, and the large audience, which included many children, especially liked her.

Maria may not have been a credit to the abbey, but Marcia Alden, who played her, was a credit to the production. My favorite song in the

show was her number with the children, "The Lonely Goatherd."

Mike Chelik, as George Von Trapp, had one of the better voices in the production, as did Shirley Harris who portrayed Mother Abbess. The acting in this comedy-drama was all fine, though actually much of the story is built around the music. The songs are the kind not heard much these days, with introductions that lead into main themes.

Songs include "The Sound of Music," "Maria," "My Favorite Things," "Do-Re-Mi," "Sixteen Going on Seventeen," "Climb Ev'ry Mountain," and "Edelweiss."

This is a perfect show for Christmas — one to take the family to see. "The Sound of Music" goes on tomorrow night at 8 and Sunday afternoon at 3. Saturday's performance is sold out. The Playhouse is located at 28 Brookline Ave., Nutley. Tickets are \$3.50 and \$4. For reservations, call 284-0404 or come to the door if you're feeling lucky.



Troop Trip — Joanne DePasquale, sitting, gets into the act behind a key punch machine which stamps out mailing addresses during Belleville Brownie Troop 969's tour of the Times/News office on Washington Ave. In the background displaying a plethora of emotions are Vickie Tighe, left, and Dawn Resciniti. The School Nine scouts also visited Town Hall as well as the Police and Fire Departments on the recent excursion.

Christmas story hour scheduled at library

A special Christmas story hour at the Belleville Public Library has been scheduled for Thursday, Dec. 22, at 3:45 p.m. The children's program will include stories, songs and a filmstrip, "The Twelve Days of Christmas."

The library will be closed Saturday, Dec. 24, and Monday, Dec. 26.

Local programs on Cablevision

(Local program highlights this week for Suburban Cablevision scheduled for Belleville subscribers on channel 3.)

TODAY, DECEMBER 15
6 p.m. Backstage with Bruce Chadwick. Guest: Clive Baldwin, impersonator of Al Jolson.
6:30 p.m. Time In. Sports talk show with Bob Ley. Tonight's guest: Carol Blazejowski, star woman's basketball player at Montclair State, and her coach, Maureen Wendelken.
7:30 p.m. Basketball: Mountain Rams vs. Verona Hillbillies from Verona.

FRIDAY, DECEMBER 16
6:30 p.m. Backstage with Bruce Chadwick. Guest: Clive Baldwin, impersonator of Al Jolson.
7 p.m. A Chanukah Party. YMWHA of West Orange presents a kindergarten class play on customs and foods of the holiday.

SATURDAY, DECEMBER 17
6:30 p.m. Time In. Sports talk show with Bob Ley. Tonight's guest: Carol Blazejowski, star woman's basketball player at Montclair State, and her coach, Maureen Wendelken.

Franklin Theatre

Nutley 997-0100

LAST TIMES THURS.

"OH GOD"

STARTS FRIDAY

The Most Powerful Adult Motion Picture Of The Year

DIANE KEATON IN

"LOOKING FOR

MR. GOODBAR"

R

The BUCCO Family

invites you to...

MARTHA'S

Vineyard

RESTAURANT & COCKTAIL LOUNGE

780 RT. 3 W. CLIFTON, N.J.

(Opposite Hoffman-LaRoche)

"Where people come to dine and not just to eat."

NORTHERN ITALIAN CUISINE

DAILY BUSINESSMEN'S LUNCHEON SPECIALS

Mon.-Fri. 11:30-2:30

DINNER

Served Mon.-Sat. 5:30 A.M. Sun. 2-9 P.M.

ENTERTAINMENT TUES.-SAT. till 2:30 A.M.

Dec. 6 - Jan. 14

TWO BITS

Reservations suggested 775-1300

WEDNESDAY, DECEMBER 21

6:30 p.m. High School Bowl. Mountain High vs. Essex Catholic in quarter-final round.

7 p.m. Superintendent's Forum. "The Role of Parent Organizations in the Schools." Mel Klein is host.

THURSDAY, DECEMBER 22

7:30 p.m. Basketball. Hillside Comets vs. Millburn Millers.

SUNDAY, DECEMBER 25

6 p.m. High School Bowl. Mountain High vs. Essex Catholic in quarter-final round.

MONDAY, DECEMBER 26

6:30 p.m. To Your Health. Verona Health Officer Michael Festa leads discussion on addictive drugs. Guests: Cecilia Cardone and Renee Williams of Integrity House, Detective Joe Pariso of Sheriff's Dept.

TUESDAY, DECEMBER 27

6:30 p.m. Roseland Report. Mayor Richard Leonard reviews 1977 with color slides.

WEDNESDAY, DECEMBER 28

6 p.m. Mayor Reports. Verona Mayor Jerome Greco hosts discussion with Sam Deneka, boro engineer, and Councilmen Frank Albright and Jack Foley. Topic: the Public Works Department.

7 p.m. Superintendent's Forum. "The Role of Parent Organizations in the Schools." Mel Klein is host.

WELCOME TO

Bella Napoli

1131 Bloomfield Ave. 365-8887

Clifton, N.J.

Featuring the best in

ITALIAN HOME COOKING

"Your Home Away From Home"

OPEN SEVEN DAYS WE CATER

(BUSINESSMEN'S LUNCH MONDAY thru SATURDAY)

PLAN AHEAD — Make Reservations early for

BRANCH BROOK MANOR RESTAURANT'S

GALA NEW YEAR'S EVE PARTY

CONTINUOUS MUSIC BY TWO GREAT BANDS

Hot hors d'oeuvres

Antipasta

Prime Rib

Open Bar

Continental Breakfast

\$65.00 per couple

13 WASHINGTON AVE., BELLEVILLE 759-9744

Belleville's fine restaurant Open daily 4-2 a.m.

CATERING

HOURS: 11-11 DAILY

751-0087

SHRIMP

ITALIAN HOT DOGS & SAUSAGE

569 Washington Ave. Belleville

STOP IN FOR FREE MENU

HAVING A PARTY?

You do the planning We'll do the cooking

WE SERVE ROYALTY Our Customers

PARTIES, TACOS, SALADS

MILKSHAKES, CHICKEN, ITALIAN FOOD, SUBMARINES, HOT SANDWICHES, HAMBURGERS

SEAFOOD HOUSE

Reserve Now for your TRADITIONAL CHRISTMAS EVE DINNER

Clams Casino & Clams Oreganato, Mussels

SALADS

Shrimp, Scungilli, Calamari (fried or stuffed), Baccala

OUR SPECIALTY: LOBSTER FRA DIAVOLO and Many Additional Sea Food Dishes

759-8132

ALL OUR DISHES CAN BE PREPARED TO TAKE HOME

RESTAURANT & COCKTAILS 14 Belmont Ave., Belleville

NOW TAKING RESERVATIONS for

NEW YEAR'S GALA

THREE BANDS WITH MUSIC

9 - 3:30

Individual Antipasto SLICED FILET MIGNON

Potato Rolls and Butter Coffee Tea Dessert

SPLIT OF CHAMPAGNE AT MIDNIGHT

OPEN BAR 9-3 A.M.

CONTINENTAL BREAKFAST Coffee & Danish at 3 A.M.

PARTY HATS & HORNS

\$60.00 PER COUPLE

Gratuity & Tax incl.

Dec. 15 Main Event

Dec. 16 & 17 Carousel

the FOUNTAIN RESTAURANT & LOUNGE

46 Watsessing Ave., Belleville 751-3800

The Thunderbird

OCEAN FRONT RESORT

TRADITIONAL New Year's Gala

STAY OVER Celebration

FESTIVE DINNER DANCE

FAVORS AND SOUVENIRS CHOICE OF ROOMS

UPSTAIRS "The Two of Us"

DOWNSTAIRS "The Right Bros."

OVERNIGHT GUEST ROOMS

THE FABULOUS T-BIRD BUFFET BRUNCH

RESERVE EARLY 201-793-2000

ROUTE 35 SOUTH MANTILOKING NEW JERSEY, 08738

CELEBRATE

New Years Eve AT THE Park Pub

FULL EVENING PLANNED FOR YOUR ENJOYMENT

SIRLOIN STEAK & LOBSTER TAILS

OPEN BAR 9 to 3

CHAMPAGNE TOAST

CONTINENTAL BREAKFAST DANCING from 9-3 to MUSIC by THE FABULOUS ROCKY FERRANTE TRIO

\$60 Per Couple (+Tax & Grat.)

SEE HOSTESS or call 235-0345

OPEN CHRISTMAS EVE serving Traditional Italian-American FISH DINNER

Inc. Baccala, Smelts, Calamari 5-9 P.M.

CLOSED DECEMBER 25

ShopRite has... Holiday Dinner.

For the host or hostess who would like to relax and enjoy the company of their holiday guests, our Service Appy Department will prepare festive, tasty platters with the cooked meats, cold cuts, cheeses and salads of your choice. Just tell us how many guests you're expecting and our experts will guide you on the size and type of platter you'll need. Save time and energy and enjoy the holiday season. Just let ShopRite do the work. For holiday platter matters... ShopRite has the answers!



London Broil	CUT FROM BEEF SHOULDER	1 lb.	\$1.59
Cube Steak	BEEF CHUCK CUT	1 lb.	\$1.69
Round Steak	BEEF BOTTOM FOR SWISSING	1 lb.	\$1.37
Chuck Steak	BONELESS BEEF	1 lb.	\$1.37
Round Steak	BEEF EYE	1 lb.	\$1.77
Chuck Steak	SEMI BONELESS BEEF	1 lb.	\$1.19
Chicken Breast	WHOLE WITH RIB CAGE	1 lb.	99¢
Chicken Breast	BONELESS AND SKINLESS	1 lb.	\$1.69
Pork	LOIN ROAST, CENTER CUT OR CHOPS, CENTER CUT, RIB CUT	1 lb.	\$1.79
Chuck Steak	BEEF FIRST CUT	1 lb.	59¢
Pork Loin	RIB END FOR BAR-B-QUE	1 lb.	\$1.19
Pork Combo	9 to 11 CHOPS CUT FROM LOIN PORTION	1 lb.	\$1.19
Pork Roast	LOIN BONELESS CUT FROM LOIN PORTION	1 lb.	\$1.59
Spare Ribs	FRESH PORK TASTY & LEAN	1 lb.	\$1.19
Veal Steak	FROZEN PLAIN OR BREADED	1 lb.	99¢
Corned Beef	DELI DELITE FIRST CUT BRISKET	1 lb.	\$1.19
Corned Beef	DELI DELITE THICK CUT BRISKET	1 lb.	79¢

BONELESS BEEF ROAST
BOTTOM ROUND OR BONELESS SHOULDER

USDA CHOICE

\$1.17 lb.

ShopRite OVEN READY TURKEYS
FROZEN

10 to 14 lb. avg. **65¢ lb.**

OVER 22 LBS. PRICED SLIGHTLY HIGHER

10 to 22 lb. avg. **59¢ lb.**

OVER 22 LBS. PRICED SLIGHTLY HIGHER

TOP ROUND OR SIRLOIN TIP, ROUND BEEF ROAST

USDA CHOICE

\$1.27 lb.

BEef TOP ROUND STEAK

USDA CHOICE

\$1.77 lb.

BEEF ROUND STEAK SIRLOIN TIP

USDA CHOICE

\$1.67 lb.

BEEF, ANY SIZE PACKAGE GROUND CHUCK

\$0.89 lb.

BEEF CHUCK BONELESS POT ROAST

USDA CHOICE

\$1.07 lb.

BEEF WITH BOTTOM ATTACHED EYE ROUND ROAST

USDA CHOICE

\$1.57 lb.

BEEF RUMP ROAST

USDA CHOICE

\$1.47 lb.

BEEF ROUND SIRLOIN TIP CUT FOR BONELESS LONDON BROIL

USDA CHOICE

\$1.87 lb.

SEMI BONELESS BEEF CHUCK ROAST

USDA CHOICE

97¢ lb.

WHOLE WITH THIGHS FRESH CHICKEN LES

69¢ lb.

GOVERNMENT GRADE "A" WHOLE FRYING CHICKENS

49¢ lb.

ShopRite OVEN ROSTER

69¢ lb.

SMOKED OR FRESH PICNIC ShopRite PORK SHOULDER

69¢ lb.

BEEF LOIN WITH TENDERLOIN SIRLOIN STEAK

USDA CHOICE

\$1.89 lb.

The Produce Place

MUSHROOMS
FRESH **89¢**
12-oz. pkg.

NAVEL 88 SIZE SUNKIST ORANGES	8 for	99¢
CALIFORNIA BROCCOLI	bunch	59¢
Tomatoes	FIRM AND RIPE 3 cts. of 3	\$1
Grapefruit	40 SIZE RED SEEDLESS	6 for 89¢
Apples	FANCY DELICIOUS RED GOLDEN WASHINGTON	lb. 39¢
Anjou Pears	U.S. FANCY	lb. 39¢
Tangelos	100 SIZE SWEET JUICY	12 for 99¢
Oranges	100 SIZE FLORIDA JUICY	12 for 99¢
Red Grapes	EMPEROR	lb. 49¢
Broccoli Rabe	CALIFORNIA	59¢
Potatoes	BAKING U.S. #1	5-lb. bag 79¢
Radishes	6-oz. bag OR SCALLIONS BUNCH	2 for 39¢
Celery	CALIFORNIA 30 SIZE	stalk 39¢
Cucumbers	EXTRA FANCY	2 for 29¢
Green Peppers	FANCY	lb. 39¢
Juicy Lemons	165 SIZE	10 for 69¢
Cranberries	OCEAN SPRAY	1-lb. bag 49¢

The Plant Place

AFRICAN CACTUS

\$1.66 ea.

The Dairy Place

BRICK BUTTER

\$1.19 1-lb. pkg.

Margarine 100% CORN OIL **49¢ 1-lb. pkg.**

Low Fat Milk SHOPRITE POPULAR BRAND **1.29 gallon cont.**

Borden Singles AMERICAN **1.29 1-lb. pkg.**

Ricotta SHOPRITE PART SKIM OR WHOLE MILK **1.99 3-lb. cup**

The Deli Place

PATRICK GUDAHY CANNED HAM

\$6.99 5-lb. can

Armour Bacon MIRA CURE **1.19 1-lb. pkg.**

Ham Dingers PATRICK GUDAHY **1.39 1-lb. pkg.**

Imported Ham POLISH **6.99 3-lb. can**

The Grocery Place

CRANBERRY JUICE

\$1.99 1-lb. can

ShopRite has Holiday TOYS AND TRIM

SCRUNCHY BEAR

\$3.99 each

Farrah Fawcett DOLL BY MEGO 12 1/2" **\$5.99**

Make-up Center BY MEGO **\$9.99 ea.**

Make-up Center OVER BY MEGO **\$9.99 ea.**

Pulsar-Man OF ADVENTURE BY MATTEL **\$6.99 ea.**

Biotron Robot BY MEGO **\$10.99 ea.**

Play Doh CHRISTMAS 36 LIGHT MIDGET U.L. APPROVED **89¢ pkg. of 4 cans**

Light Set **\$2.99**

The Bakery Place

RYE BREAD

39¢ 16-oz. loaf

Mini Donuts SHOPRITE 4-PACK BRAIDS **3 for 1**

Danish SHOPRITE 4-PACK BRAIDS ASSORTED-FRUIT CINNAMON **89¢ 9-oz. box**

White Bread ELIZABETH YORK PREMIUM **89¢ loaf**

Frank Rolls OR HAMBURGER SHOPRITE PACKAGE OF 8 **\$1 3-pkg.**

The Appy Place

CHICKEN ROLL

99¢ 1/2-lb.

The Frozen Foods Place

BANQUET DINNER

2 89¢ 11-oz. pkgs.

Health & Beauty Aids

FABERGE SHAMPOO

99¢ 16-oz. bottle

Swiss Cheese AUSTRIAN IMPORTED **99¢ 1-lb. pkg.**

Roast Beef U.S.D.A. CHOICE COOKED (STORE SLICED) **79¢ 1-lb. pkg.**

Hard Salami (B.C.) BANNER **99¢ 1-lb. pkg.**

Flour HECKLER'S OR UNBLEACHED OR REG. GOLD MEDAL/PILLSBURY **59¢ 5-lb. bag**

Coffee CHASE & SANBORN CHOCK FULL OF NUTS **\$2.79 1-lb. can**

Crisco Shortening **\$1.69 3-lb. can**

Diapers JOHNSON & JOHNSON NEWBORN **\$1.69 box of 24**

Conditioner FABERGE ORGANIC **99¢ 16-oz. jar**

GOURMET COOKWARE

SAUCE PAN

\$2.49

POTATO CHIPS

69¢ 12-oz. bag

THE FISH MARKET

ORDER YOUR HOLIDAY SEAFOOD NOW. TASTY, FRESH SEAFOOD IS A MUST FOR YOUR HOLIDAY MENU. PLAN AHEAD

EXTRA LARGE SHRIMP

\$3.99 lb.

***Fillet of Sole** FRESH **\$1.99 lb.**

***Boston Scrod** FRESH FILLET **\$1.99 lb.**

***Fresh Trout** CLEAR SPRING RAINBOW PAN READY **\$2.19 lb.**

Broccoli SHOPRITE "GRADE A" SPEARS **3 10-oz. pkgs. \$1**

Cool Whip BIRDS EYE **49¢ 9-oz. cont.**

Cheese Pizza BUTIRONI **79¢ 15-oz. pkg.**

The Ice Cream Place

PIES MRS. SMITHS "CHERRY WITH ICE CREAM" COCONUT CUSTARD 6-oz. OR NATURAL JUICE APPLE PIES **\$1.39 37-oz. pk.**

ICE CREAM SHOPRITE **99¢ 1/2-gal. container**

Dixie Cups ICE CREAM SHOPRITE **99¢ 12-pkg.**

COVERED CASSEROLE

\$6.99 8 inch

COVERED STEW POT 6 1/2 qt. **\$8.99**

WITH LEGS COLANDER each **\$7.99**

WITH COVER DUCK OVEN quart **\$8.99**

BROWN PORCELAIN 2 qt. **\$7.99**

TINA KETTLE quart **\$7.99**

VALUABLE COUPON

One (1) 1-lb. can **MAXWELL HOUSE COFFEE**

\$2.59

COUPON GOOD AT ANY SHOPRITE MARKET. LIMIT ONE PER FAMILY. EXPIRES SUN. DEC. 11 THRU SAT. DEC. 17, 1977.

SAVE 40¢

ShopRite Coupon

One (1) 14 1/2-oz. box of **BURRY'S CLASSIC ASSORTED COOKIES**

79¢

COUPON GOOD AT ANY SHOPRITE MARKET. LIMIT ONE PER FAMILY. EXPIRES SUN. DEC. 11 THRU SAT. DEC. 17, 1977.

WITH THIS COUPON

ShopRite Coupon

One (1) 1-lb. pkg. of **ShopRite BRICK BUTTER**

99¢

COUPON GOOD AT ANY SHOPRITE MARKET. LIMIT ONE PER FAMILY. EXPIRES SUN. DEC. 11 THRU SAT. DEC. 17, 1977.

WITH THIS COUPON

ShopRite Coupon

Towards the purchase of one (1) Monets **ONE QUART SAUCEPAN**

\$1

COUPON GOOD AT ANY SHOPRITE MARKET. LIMIT ONE PER FAMILY. EXPIRES SUN. DEC. 11 THRU SAT. DEC. 17, 1977.

WITH THIS COUPON

"In order to assure a sufficient supply of sale items for all of our customers, we must reserve the right to limit the purchase of sales to units of 4 of any sale items, except where otherwise noted." Not responsible or typographical errors. Prices effective thru Sat., Dec. 17, 1977. Copyright WAKEFERN FOOD CORPORATION 1977.